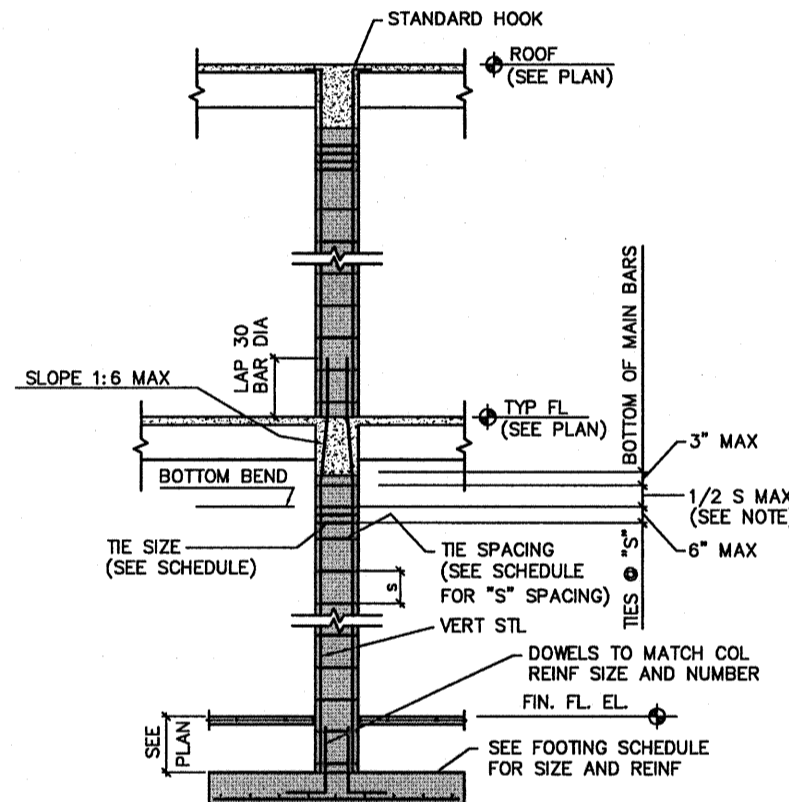


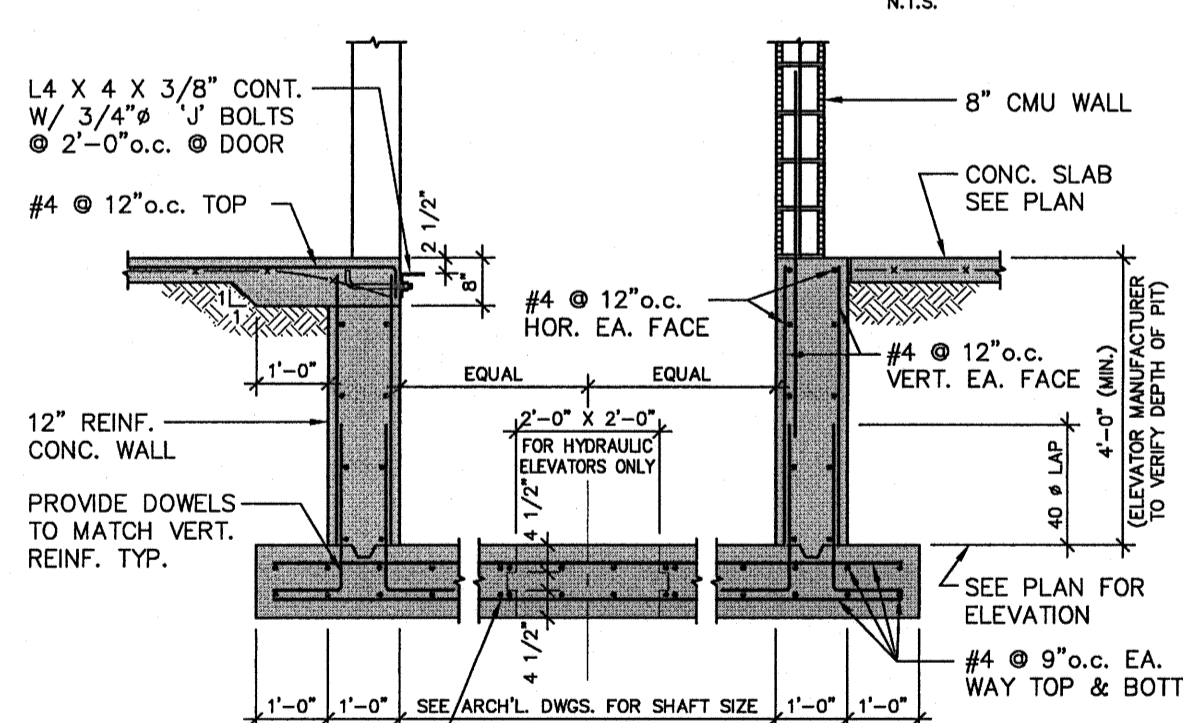
- WOOD TRUSSES SHALL BE BRACED AND ERECTED IN ACCORDANCE WITH THE "TRUSS PLATE INSTITUTE" BRACING WOOD TRUSSES COMMENTARY AND RECOMMENDATIONS, HB-91, BRACING IN THE PLAN OF THE WEB MEMBERS:
  - THE TRUSS FABRICATOR SHALL PROVIDE AND LOCATE CONTINUOUS LATERAL BRACING FOR EACH TRUSS WEB MEMBER AS REQUIRED.
  - LATERAL BRACING SHALL BE RESTRAINED BY DIAGONAL BRACING (MIN. 2" THICK NOMINAL LUMBER). THIS BRACING IS TO BE CONTINUOUS.
  - A MINIMUM OF TWO ROWS OF DIAGONAL BRACING IS REQUIRED, ONE AT EACH VERTICAL WEB MEMBER CLOSEST TO BEARING LOCATIONS.
- THE BOTTOM CHORDS SHALL BE BRACED BY CONTINUOUS LATERAL BRACING SPACED AT 8'-0" O. C. PER TRUSS ENGINEER WITH A CEILING ATTACHED TO BOTTOM OF TRUSSES. OR IF NO CEILING IS ATTACHED TO BOTTOM OF TRUSSES BRACING SHALL BE MIN. 2" x 4" @ 36" O.C. NAILED TO THE TOP OF THE BOTTOM CHORD. DIAGONALS PLACED AT 45° TO THE LATERAL BRACES SHALL BE LOCATED AT EACH END. IF BRACING EXCEEDS 80 FEET IN LENGTH, DIAGONAL BRACING SHOULD BE REPEATED AT 20 FOOT INTERVALS.
- TOP CHORD BRACING:
  - IF PLYWOOD DECKING IS APPLIED DIRECTLY TO TOP CHORD, PROPERLY LAPPED AND NAILED TO DEVELOP DIAPHRAGM ACTION, BRACING IS NOT REQUIRED.
  - IF PURLINS ARE USED, DIAGONAL TOP CHORD BRACING IS REQUIRED AT EACH END. IF BUILDING EXCEEDS 80 FEET IN LENGTH, DIAGONAL BRACING SHOULD BE REPEATED AT 20 FOOT INTERVALS.

WOOD TRUSS BRACING DETAIL

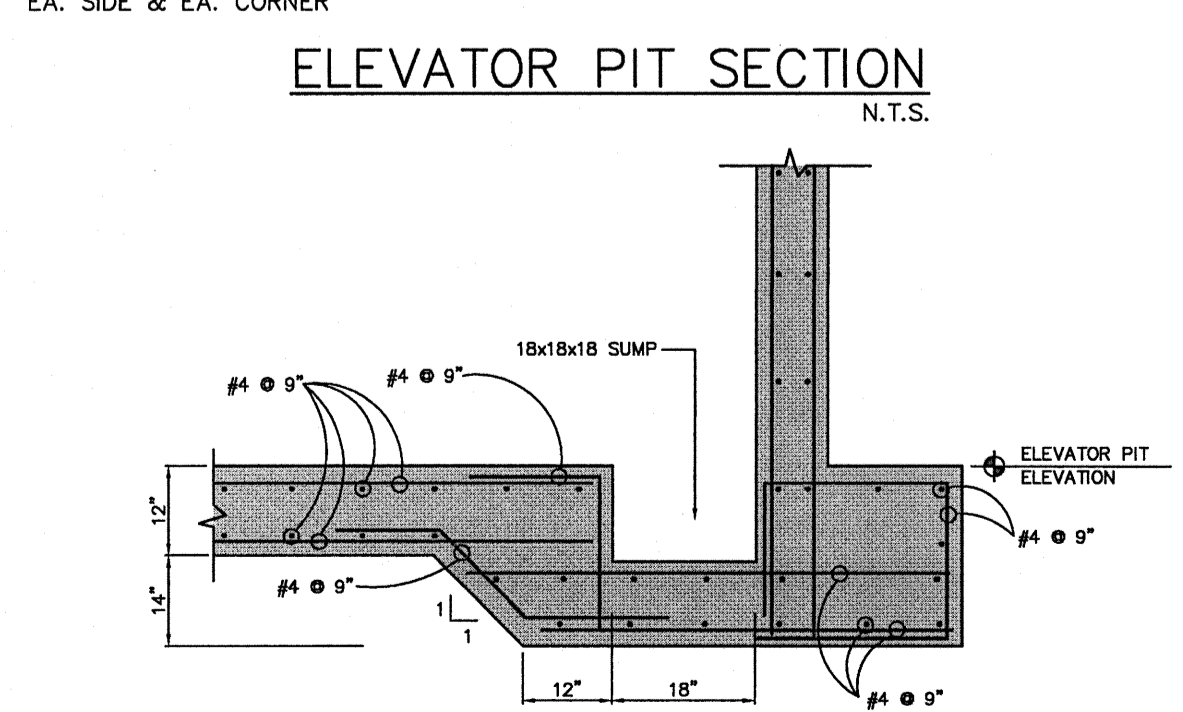


- NOTE:
- ADD EXTRA TIES IF THE DISTANCE BETWEEN BOTTOM LAYER OF SLAB REINFORCEMENT AND LOWER POINT OF OFFSET BENT IS MORE THAN 1/2 S (HALF SCHED. TIES SPACING).
  - WHERE COLUMN IS SPICED BETWEEN FLOORS, PROVIDE CLASS B TENSION LAP SPICE.

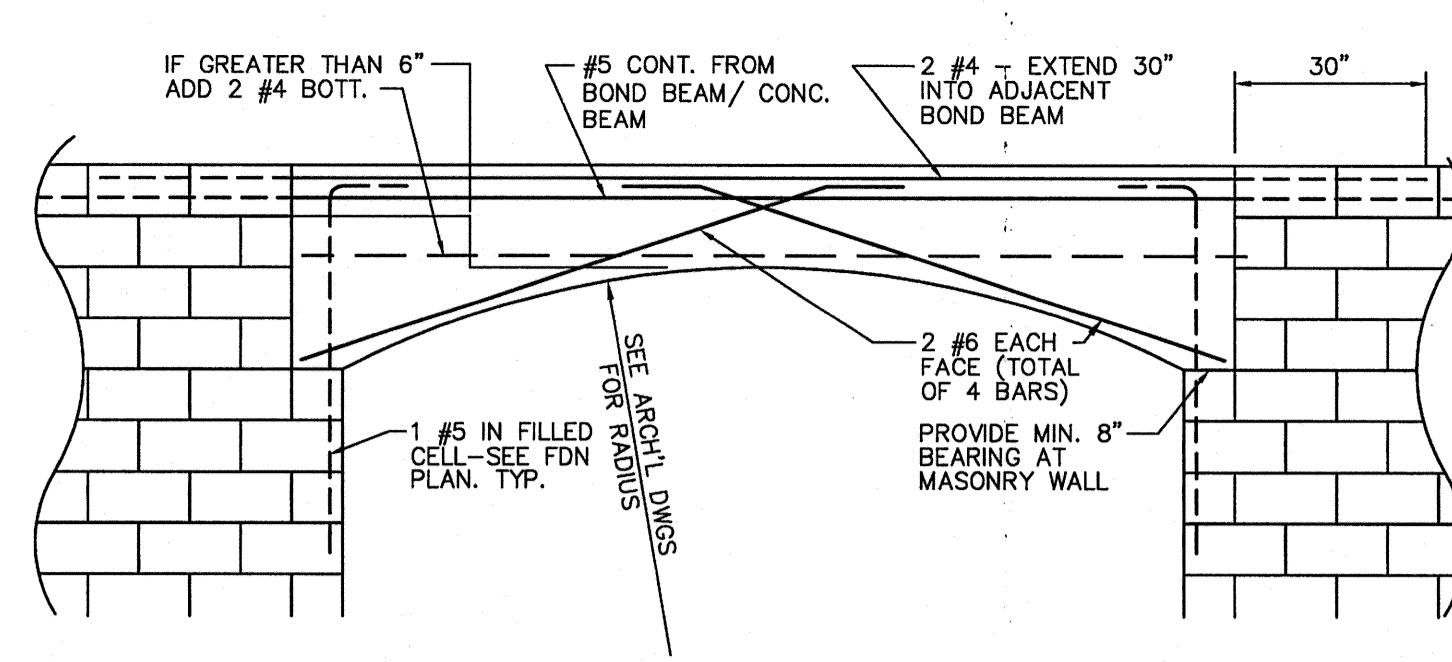
TYPICAL CONCRETE COLUMN DETAIL



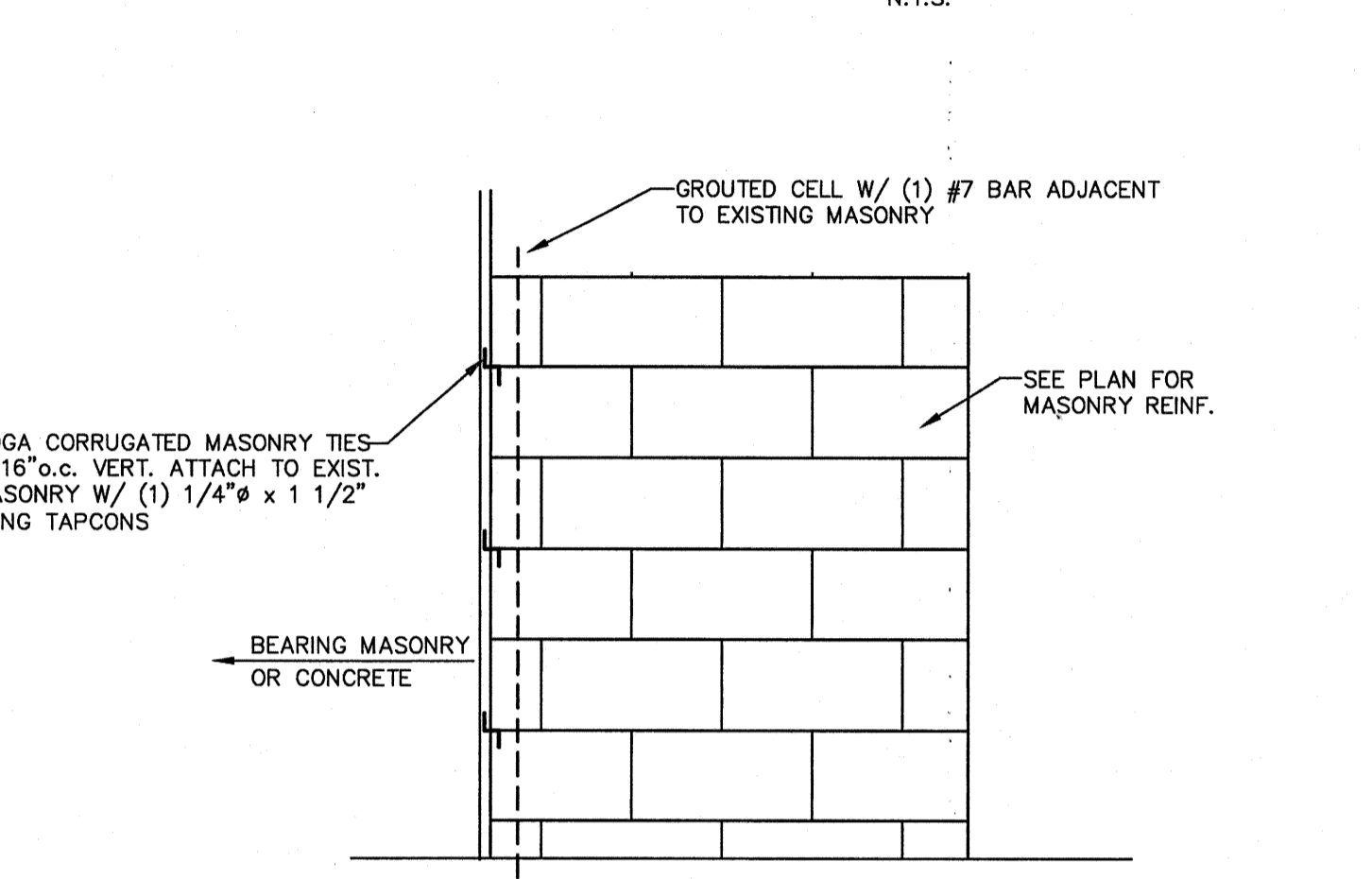
ELEVATOR PIT SECTION



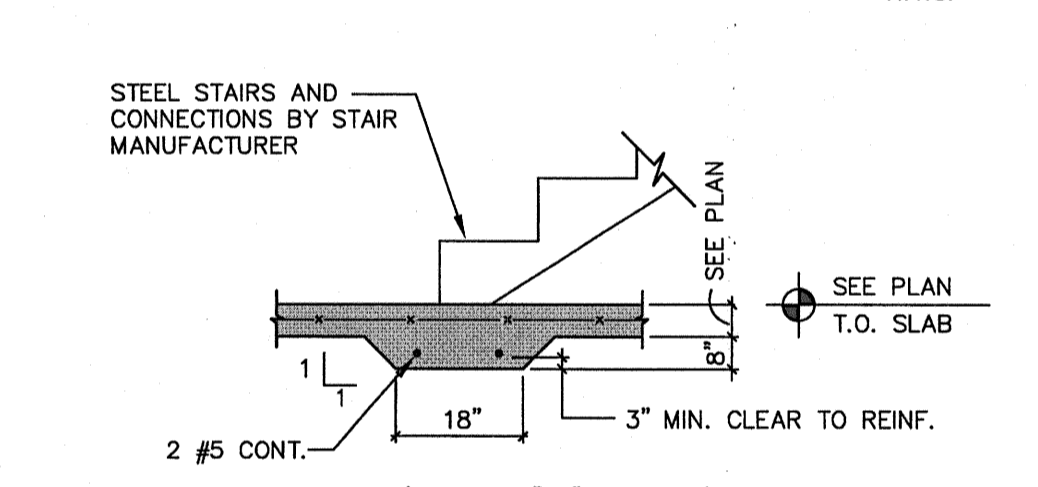
TYPICAL SUMP DETAIL



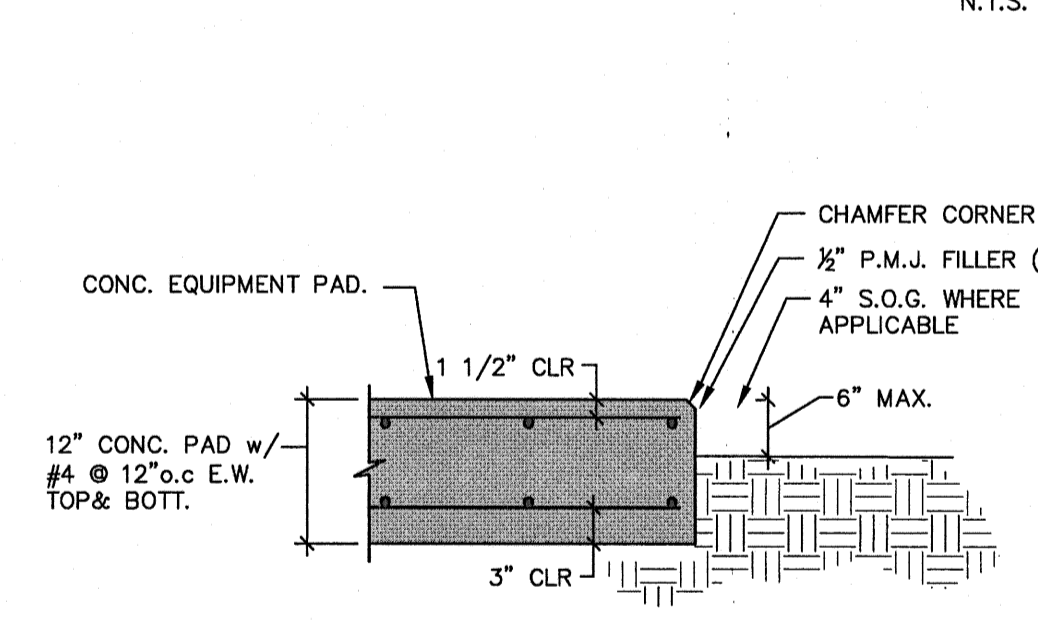
TYPICAL ARCHED BEAM DETAIL



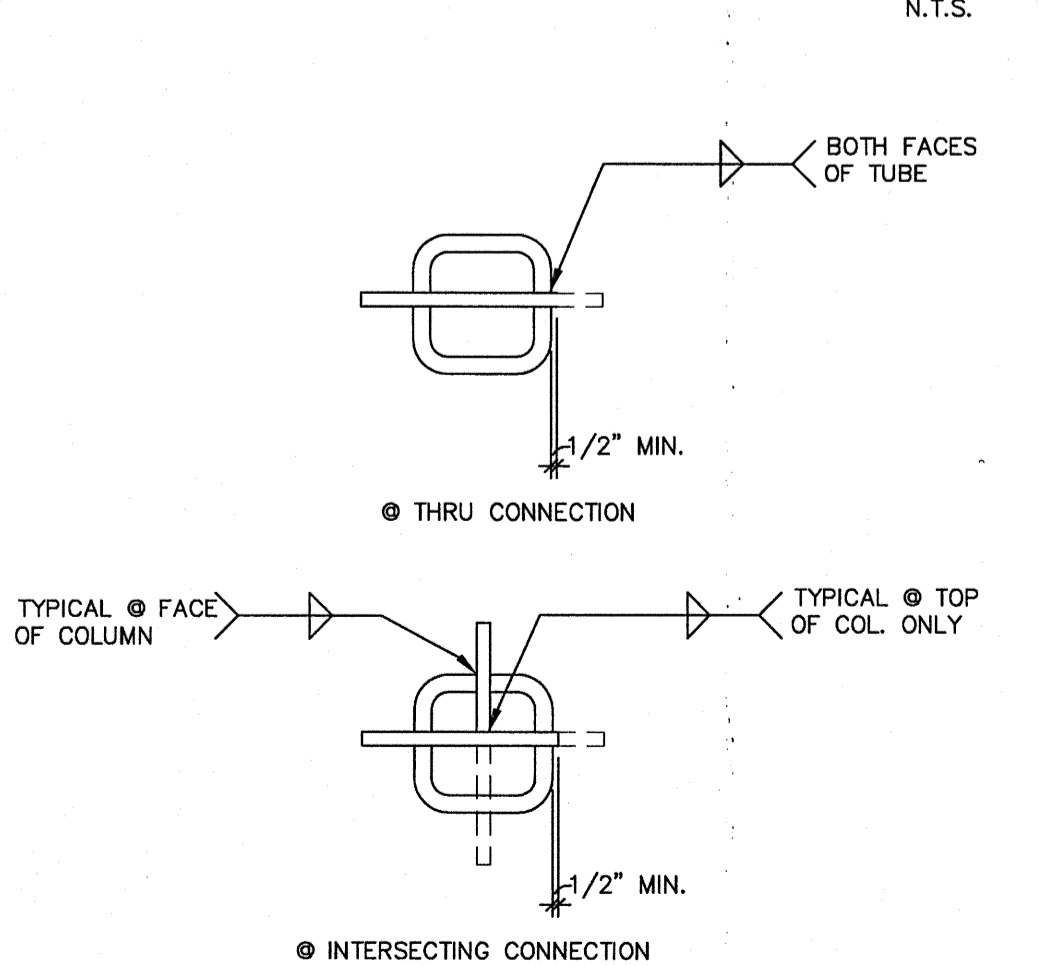
BEARING CMU ADJACENT TO INFILL CMU



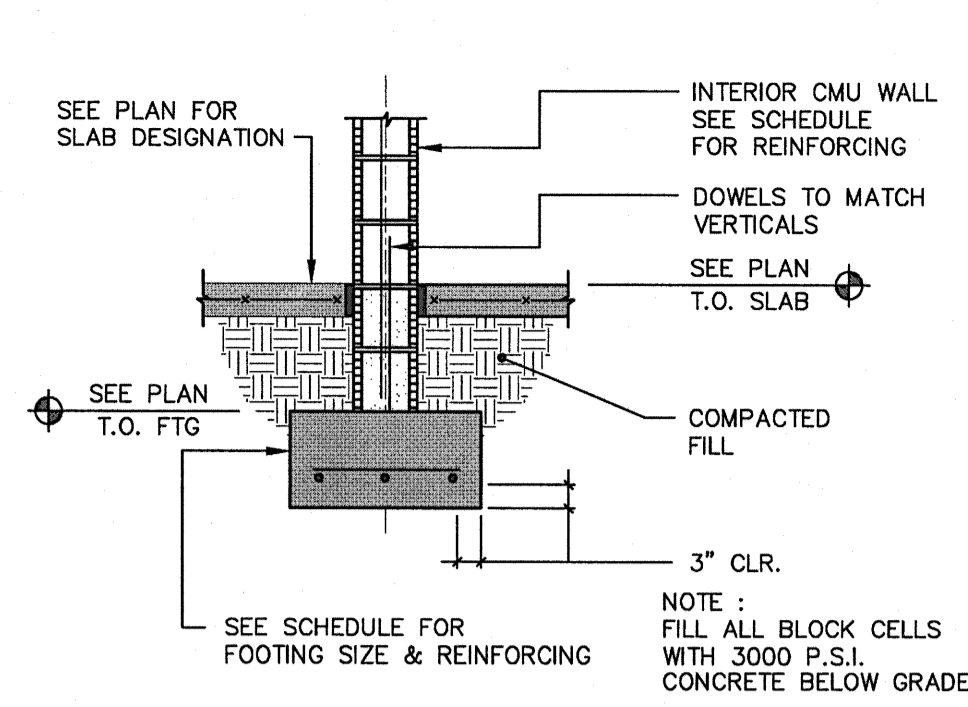
TYPICAL THICKENED SLAB AT STEEL STAIRS



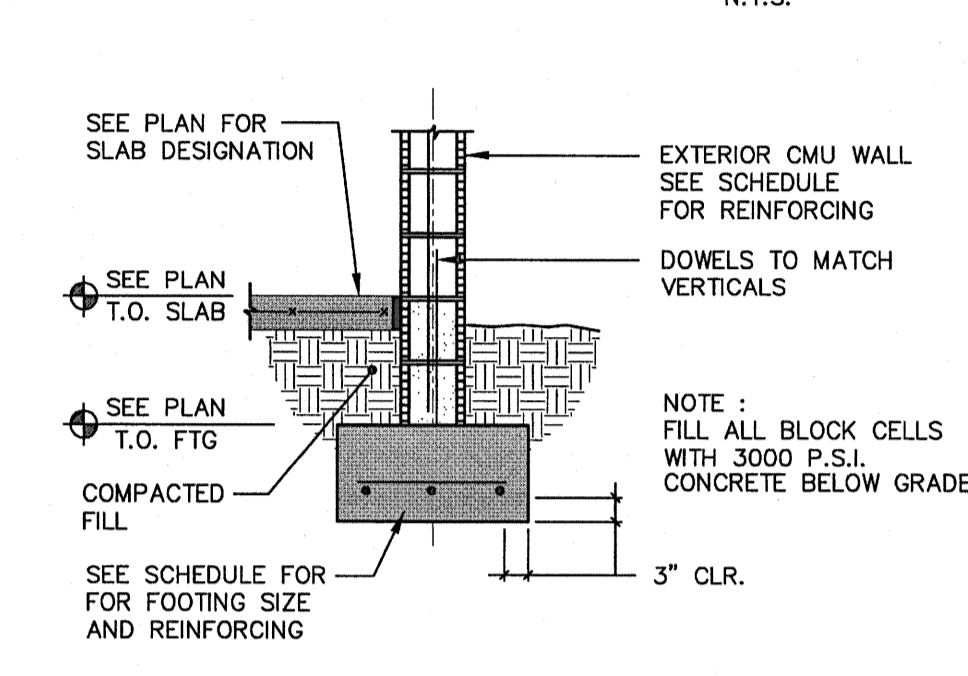
TYPICAL CONC. EQUIP. PAD ON GRADE



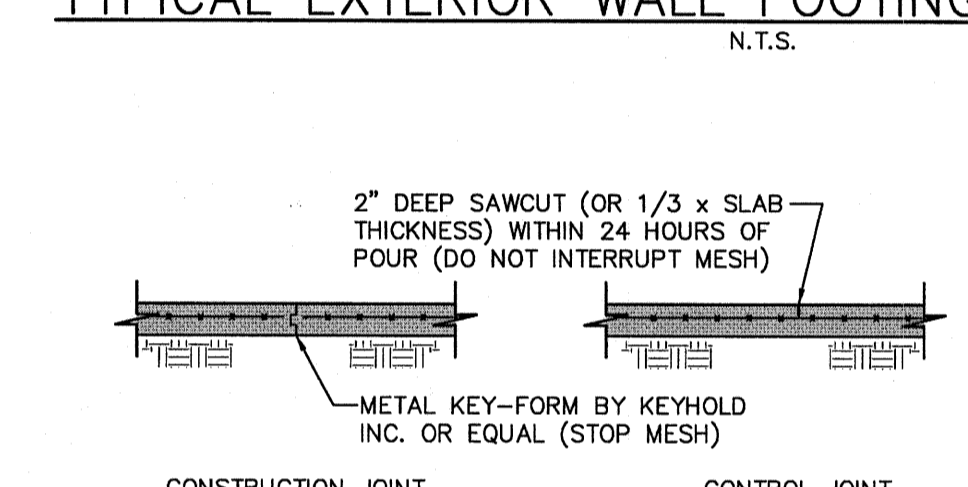
TYPICAL THRU PLATE DETAIL



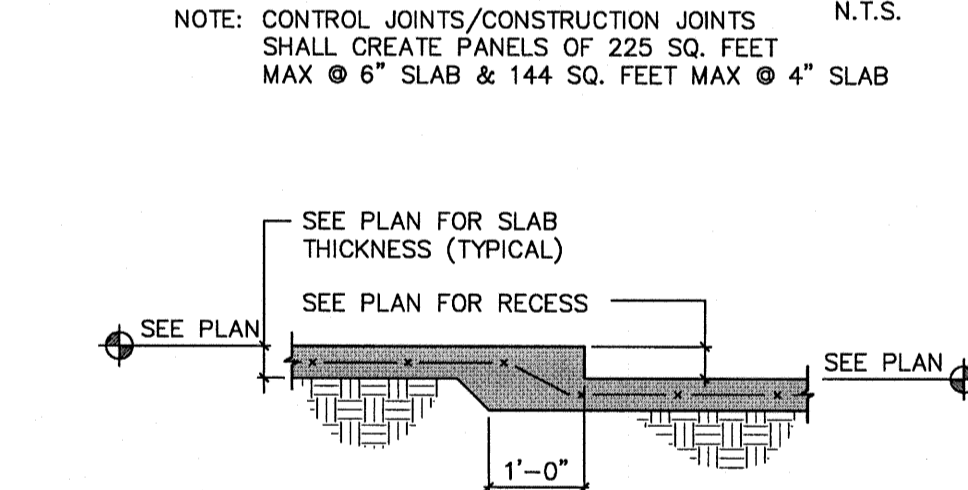
TYPICAL INTERIOR WALL FOOTING



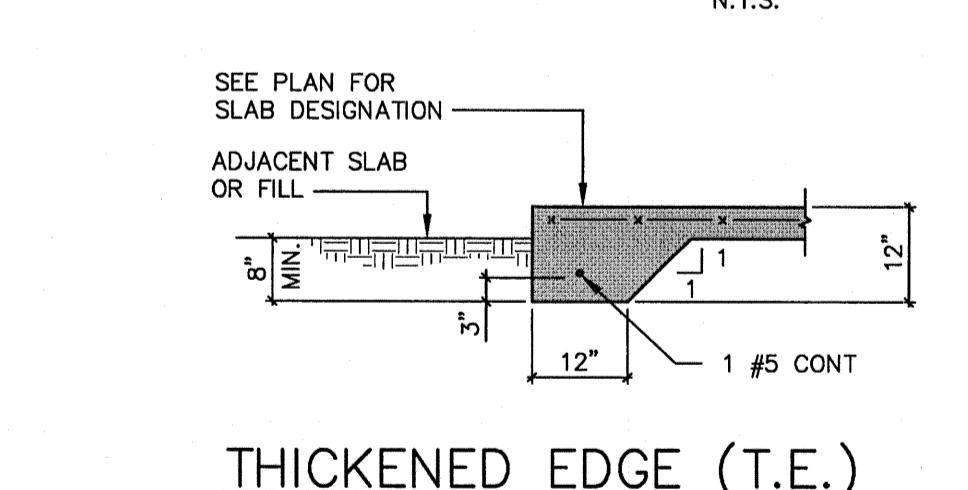
TYPICAL EXTERIOR WALL FOOTING



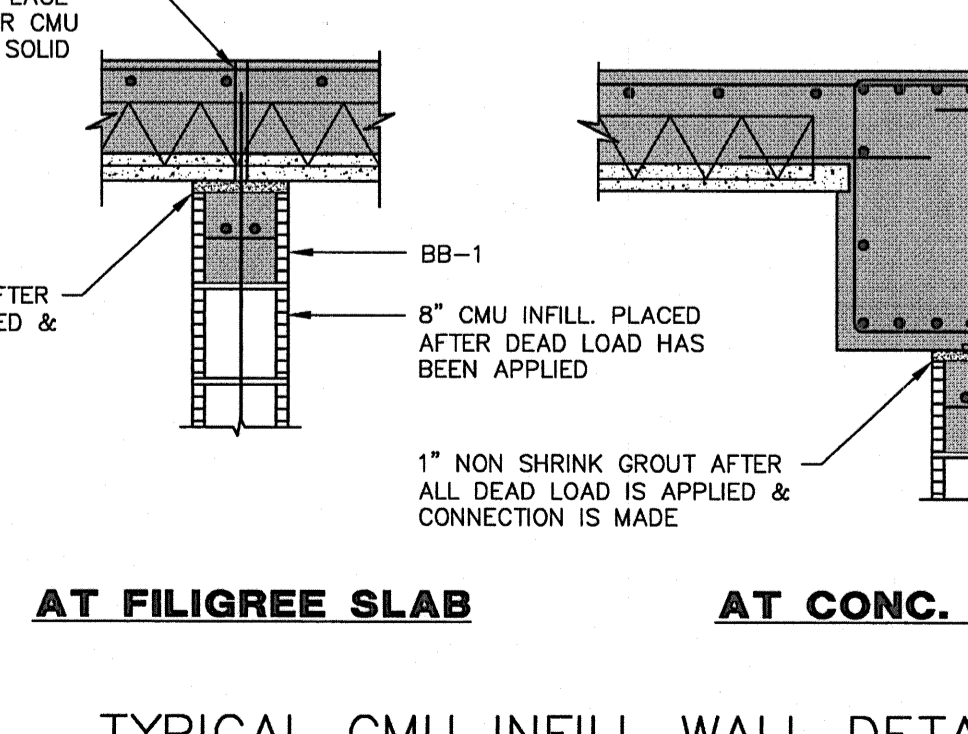
TYPICAL SLAB-ON-GRADE



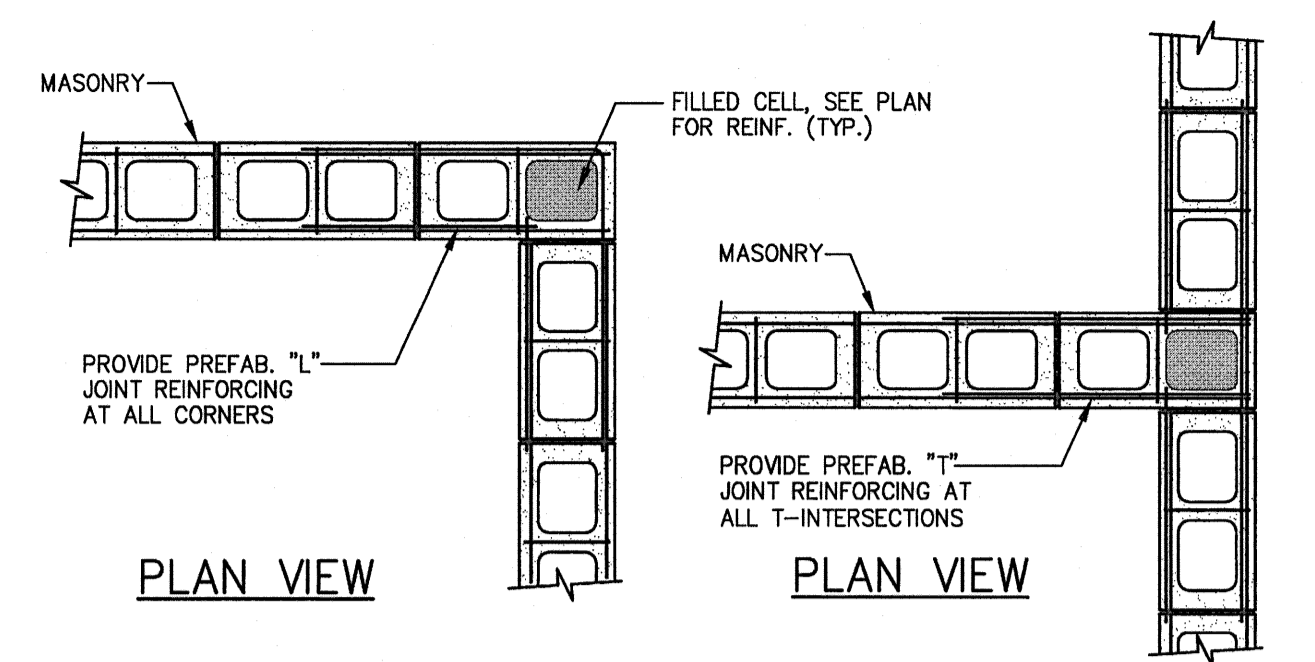
TYPICAL SLAB RECESS



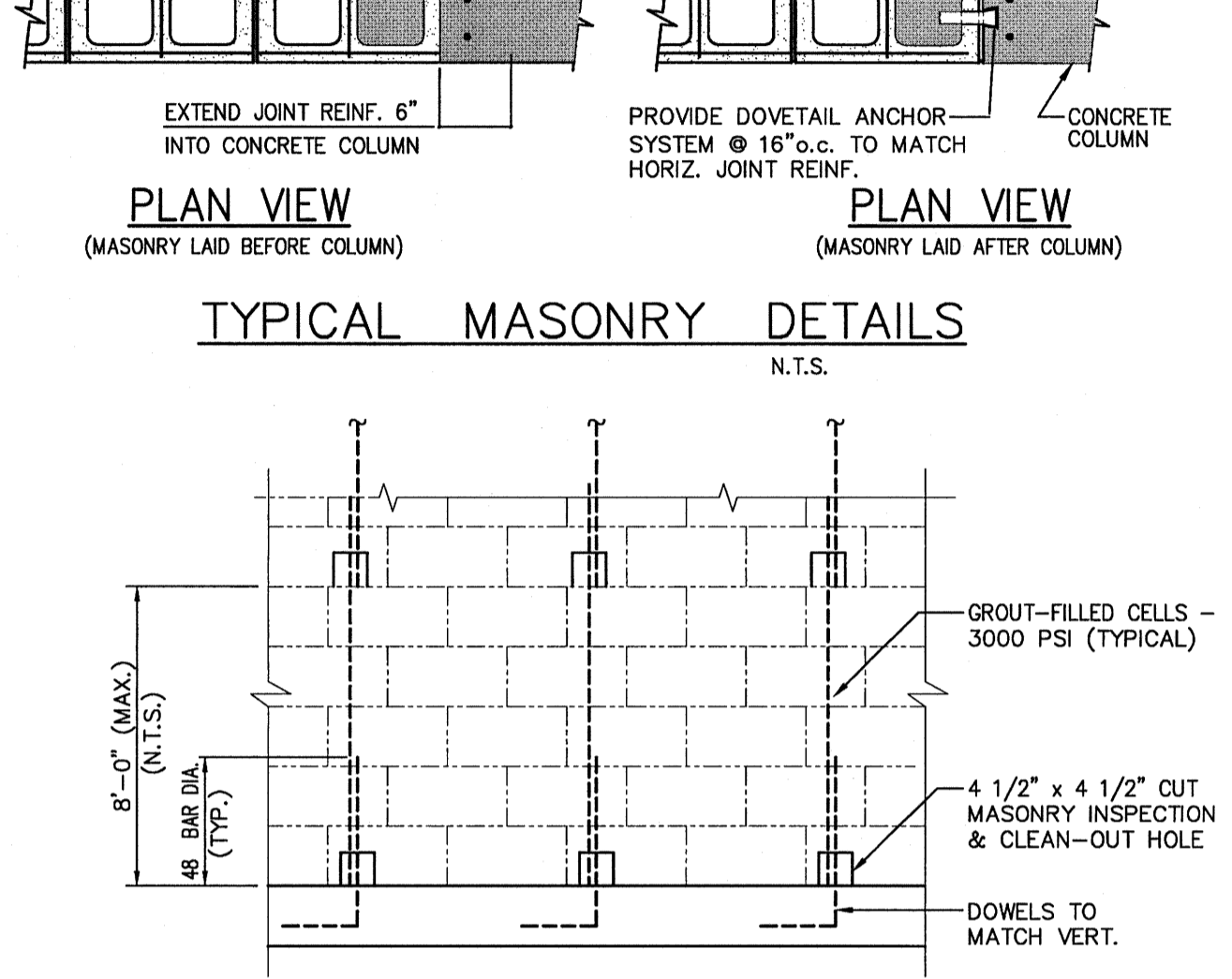
THICKENED EDGE (T.E.)



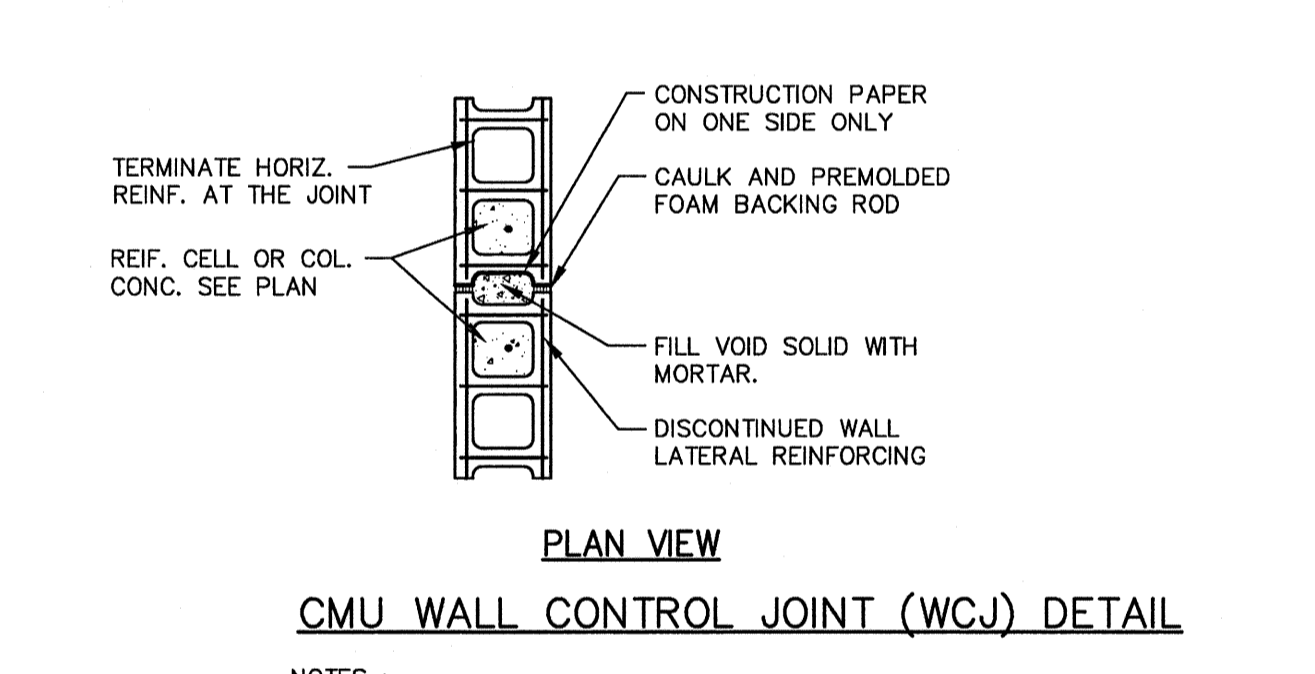
TYPICAL CMU INFILL WALL DETAILS



TYPICAL MASONRY FILLED CELL DETAIL



CMU WALL CONTROL JOINT (WCJ) DETAIL



COVER REQUIREMENTS FOR SLOPED FILIGREE SLABS @ BALCONIES

REVISIONS	BY

NO.	DESCRIPTION

NO.	DESCRIPTION

NO.	DESCRIPTION

NO.	DESCRIPTION

NO.	DESCRIPTION

NO.	DESCRIPTION

**THE PECK PLAZA**  
1295 U.S. HIGHWAY ONE  
NORTH PALM BEACH, FLORIDA

**PERMIT SET**  
01/20/11

**ONM&J**  
O'Donnell, Naccarato, Mignogna Jackson  
STRUCTURAL ENGINEERS

321 15TH STREET, SUITE 200  
WEST PALM BEACH, FLORIDA 33401  
(561) 835-9994 FAX (561) 835-8255 I.C. #0004386  
JOB # 356.154

01-20-11  
JOHN BOZZETTO  
P.E. FLORIDA  
REG. #71251