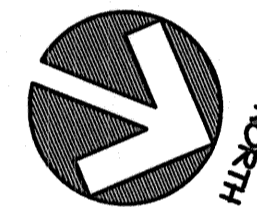


**THIRD FLOOR FRAMING PLAN**

1/8" = 1'-0"

**NOTES:**

1. ALL CMU TO BE MW1 UNLESS NOTED OTHERWISE (TYP.)

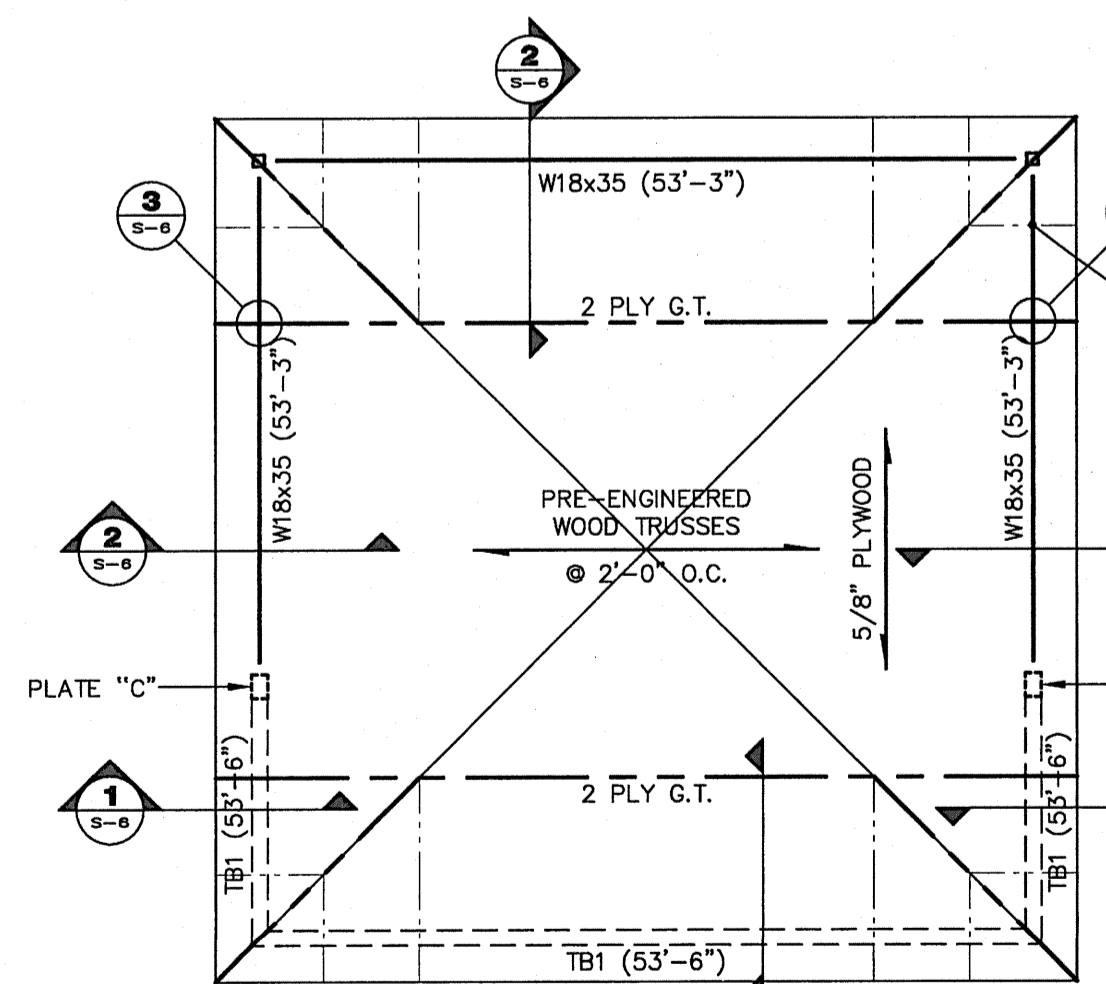
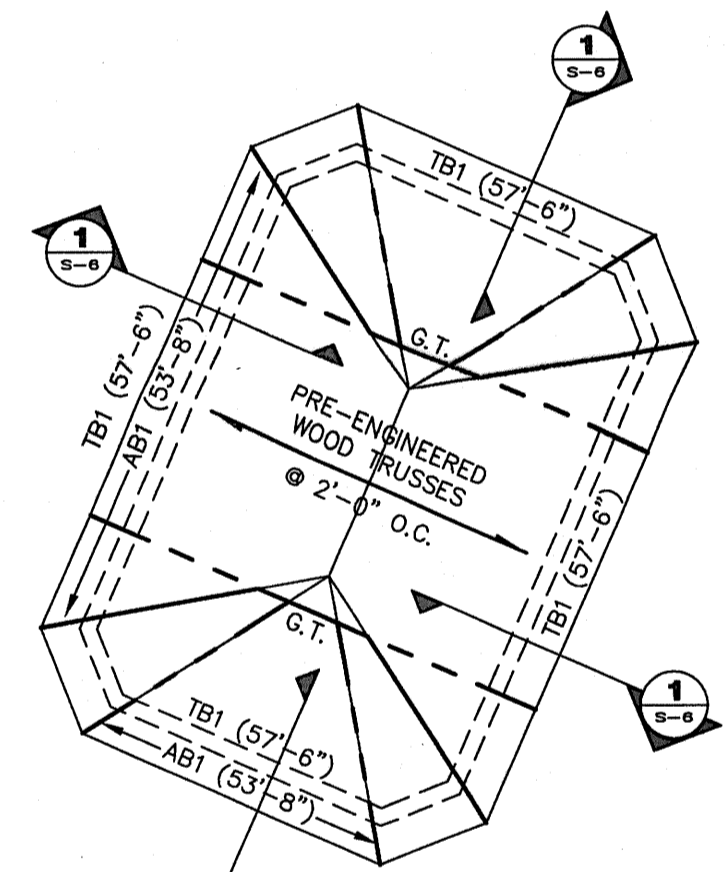


**LEGEND:**

- ▬ - INDICATES CMU BEARING WALL.
- ▬ - INDICATES CMU INFILL WALL. TO BE INSTALLED AFTER ALL DEADLOADS ARE APPLIED TO ALL BEAMS ABOVE AND BELOW WALL.
- F20.12, F40 - INDICATES CONCRETE FOOTING. SEE SCHEDULE ON S-3.0
- MW - INDICATES MASONRY WALL. SEE SCHEDULE ON S-3.0
- SC - INDICATES STEEL COLUMN. SEE SCHEDULE ON S-3.0
- C - INDICATES CONCRETE COLUMN. SEE SCHEDULE ON S-3.0
- C (NLB) - INDICATES NON-LOAD BEARING CONCRETE COLUMN. SEE SCHEDULE ON S-3.0
- TE - INDICATES THICKENED EDGE. SEE TYPICAL DETAIL ON S-3.1
- B - INDICATES CONCRETE BEAM. SEE SCHEDULE ON S-3.0
- TB - INDICATES CONCRETE TIE BEAM. SEE SCHEDULE ON S-3.0
- AB - INDICATES CONCRETE ARCH BEAM. SEE SCHEDULE ON S-3.0
- (XX'-XX") - INDICATES TOP OF BEAM ELEVATION.

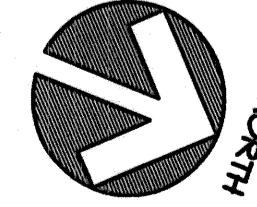
ALL CMU TO HAVE  
f'm = 2500 PSI

NOTE: ALL REINFORCING STEEL (INCLUDING TEMPERATURE STEEL) FOR FILIGREE SLABS (BOTH PRECAST AND POURED-IN-PLACE PORTIONS) TO BE PROVIDED BY FILIGREE. TYP.



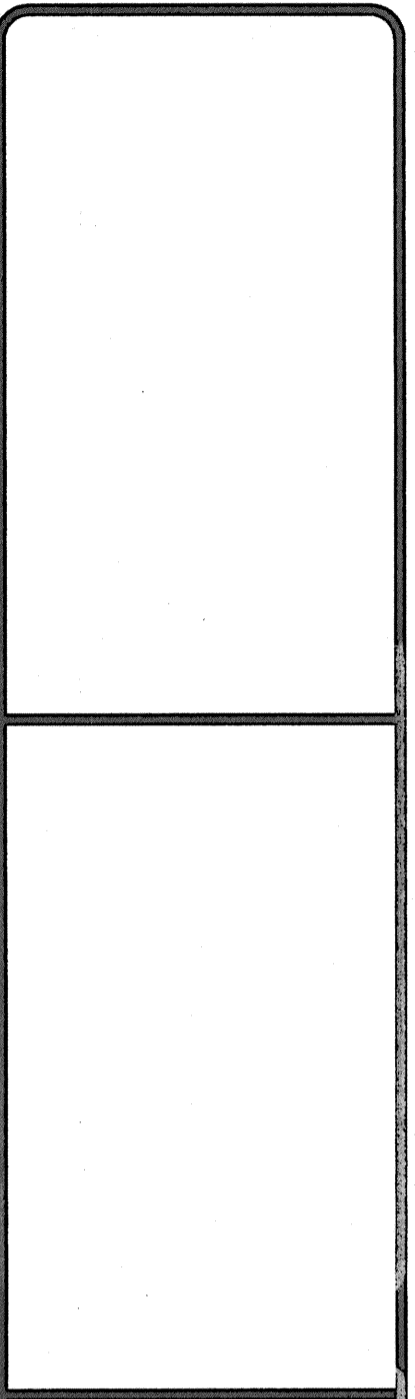
**ROOF FRAMING PLAN**

1/8" = 1'-0"



AT ARCHED WINDOWS DROP 8" PORTION OF B3 TO FORM ARCH. SEE TYP ARCH BEAM DETAIL ON S-3.1 AND TYP DROP BEAM DETAIL ON S-4.

REVISIONS	BY



**THE PECK PLAZA**  
1295 U.S. HIGHWAY ONE  
NORTH PALM BEACH, FLORIDA

**PERMIT SET**  
01/20/11

**ONM**  
O'Donnell, Naccarato, Mignogna & Jackson  
STRUCTURAL ENGINEERS  
231 15TH STREET, SUITE 200  
WEST PALM BEACH, FLORIDA 33411  
(561) 835-9994 FAX (561) 835-8235  
LIC. #0004386  
JOB # 356.154

**DRAWN**  
CB  
**CHECKED**  
JB  
**DATE**  
1/20/11  
**SCALE**  
AS NOTED  
**JOB NO.**

**SHEET**  
**S-2**  
OF SHEETS

01-20-11  
JOHN BOZZETTO  
P.E. FLORIDA  
REG. #71251