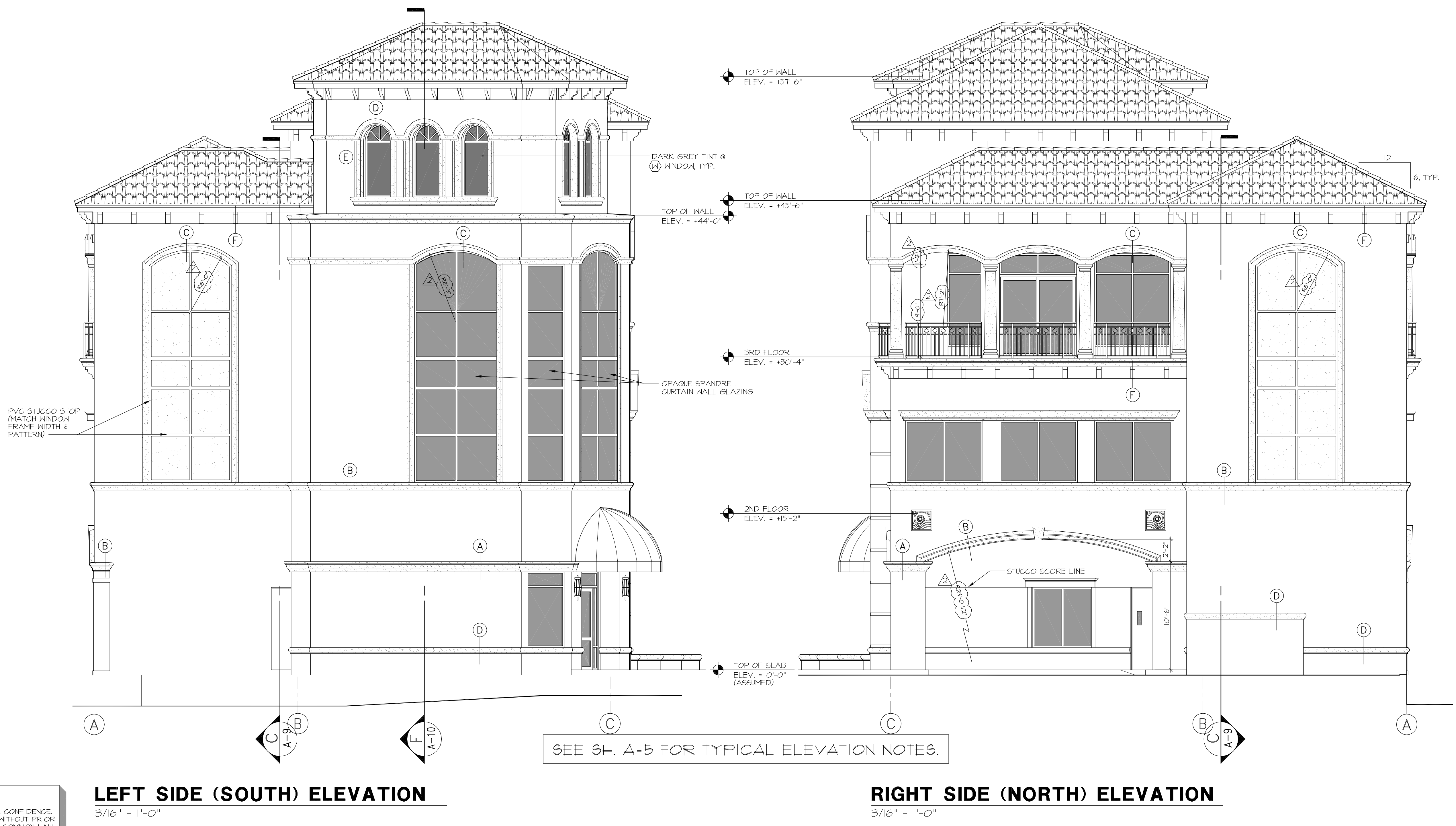


REVISIONS	BY
6/23/11 - ADD DIMENSIONS	

AD1 architectural design associates
 jeffrey d. gappalar architect
 4290 professional center drive
 suite 203 palm beach gardens, florida 33410
 (561) 426-1288
 jg@ad1.com

PECK PLAZA
 1295 U.S. HIGHWAY ONE
 NORTH PALM BEACH, FLORIDA

DRAWN
 CHECKED
 DATE P.S. 1/20/11
 SCALE AS NOTED
 JOB NO.
 SHEET
A-7
 OF SHEETS



COPYRIGHTED 2011
 THIS ARCHITECTURAL DRAWING IS GIVEN IN CONFIDENCE. NO USE OR DISSEMINATION MAY BE MADE WITHOUT PRIOR WRITTEN CONSENT OF THE ARCHITECT. ALL COMMON LAW RIGHTS OF COPYRIGHT AND OTHERWISE ARE HEREBY SPECIFICALLY RESERVED.