

REVISIONS	BY
3/22/11 - BLDG. DEPT. COMMENTS	

**ADAM** architectural design associates  
 jeffrey d. gappalar architect  
 4290 professional center drive  
 suite 209 palm beach gardens, florida 33410  
 FLORIDA LICENSE NUMBER  
 13614 & 13615  
 jg@adamad.com

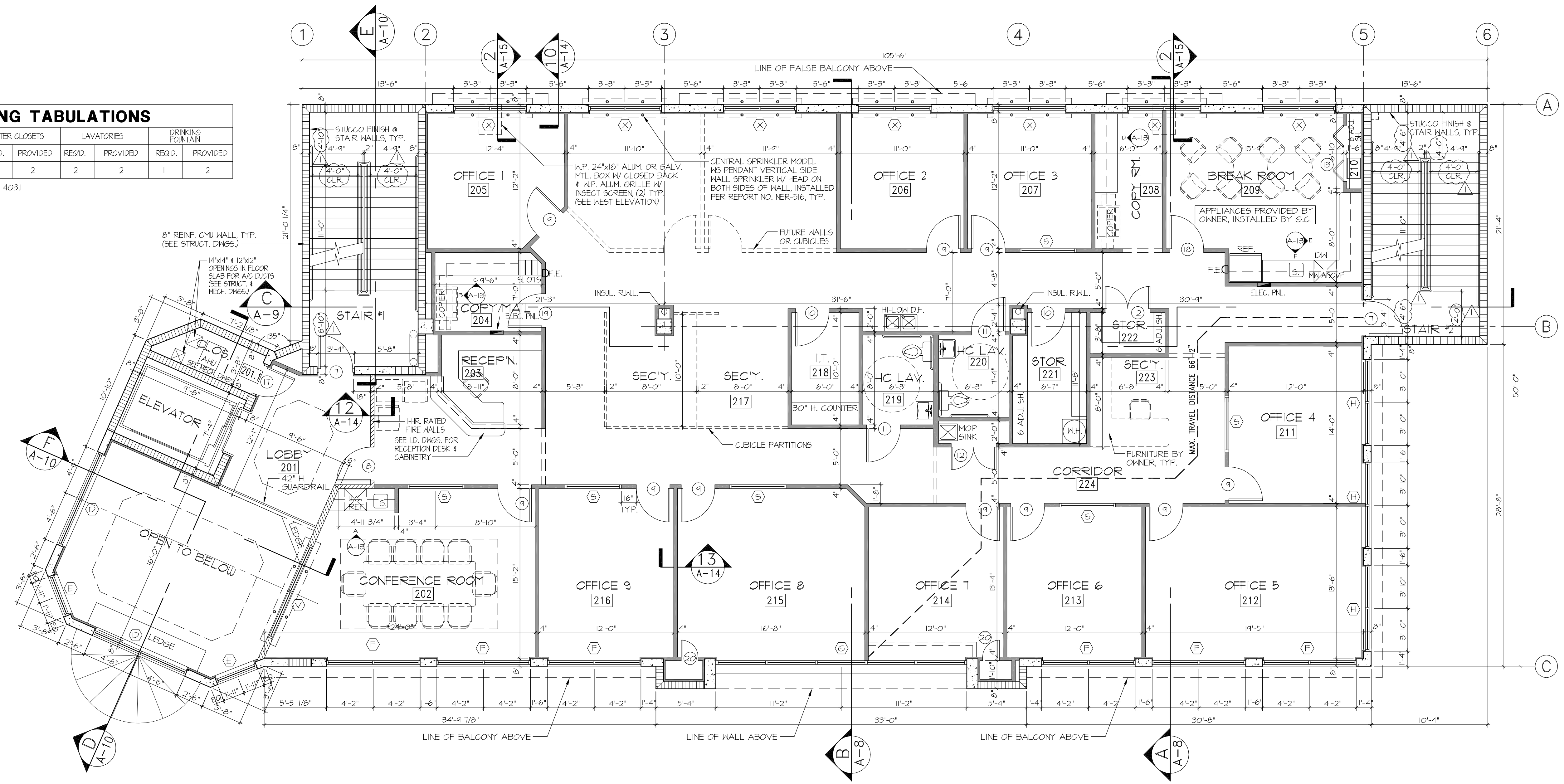
**PECK PLAZA**  
 1295 U.S. HIGHWAY ONE  
 NORTH PALM BEACH, FLORIDA

**DRAWN**  
**CHECKED**  
**DATE**  
 P.S. 1/20/11  
**SCALE**  
 AS NOTED  
**JOB NO.**  
**SHEET**  
**A-2**  
**OF SHEETS**

**PLUMBING TABULATIONS**

TOTAL OCCUPANCY	WATER CLOSETS		LAVATORIES		DRINKING FOUNTAIN	
	REQ'D.	PROVIDED	REQ'D.	PROVIDED	REQ'D.	PROVIDED
4,545 S.F. / 100 = 46	2	2	2	2	1	2

PER FBC 2007 (PLUMBING) TABLE 403.1



**SECOND FLOOR PLAN**

- 3/16" = 1'-0"
- NOTES (TYP. ALL FLOOR PLANS):
- LAVATORY WALLS SHALL BE PAINTED W/ NONABSORBENT PAINT TO 4'-0" MIN. A.F.F.
  - VINYL WALLCOVERING SHALL NOT BE INSTALLED ON EXTERIOR WALLS.
  - OWNER AND GENERAL CONTRACTOR SHALL VERIFY & COORDINATE WITH INTERIOR DESIGNER SELECTION OF FINISHES, PAINT COLORS, FIXTURES, FITTINGS, DOOR TYPES, TRIM, WINDOW TREATMENTS, ETC. PRIOR TO CONSTRUCTION.
  - INTERIOR FINISHES ON WALLS AND CEILING SHALL BE CLASS "A", "B" OR "C".
  - ALL FURNITURE, WINDOW TREATMENTS, AND EQUIPMENT IS BY OWNER.
  - STENCIL ALL FIRE/SMOKE WALLS ABOVE CEILING W/ WORDING "FIRE & SMOKE BARRIER, PROTECT ALL OPENINGS".
  - SEE SH. A-12 FOR DOOR SCHEDULE, STOREFRONT ELEVATIONS, AND DETAILS.
  - SEE FIRE PROTECTION AND ELECTRICAL PLANS FOR EXIT / EMERGENCY LIGHTING AND FIRE ALARM DEVICES.

**LIFE SAFETY TABULATIONS - SECOND FLOOR**

OCCUPANCY	GROSS AREA	SF/OCCUPANT	OCCUPANTS	REQ'D. EXIT WIDTH	PROVIDED	MAX. TRAVEL DIST.	ACTUAL TRAVEL DIST.	NO. OF EXITS REQ'D.	NO. OF EXITS PROVIDED	
BUSINESS	4,545 S.F.	100	46	x3'-5"	13.8"	68"	300'*	66'-2" (SEE PLAN)	2	2

CODE: 2007 FLORIDA BUILDING CODE WITH 2009 SUPPLEMENTS  
 SEE ELECTRICAL DRAWINGS FOR EMERGENCY AND EXIT LIGHTING.  
 \*PER 2007 FBC TABLE 1016.1

COPYRIGHTED 2011  
 THIS ARCHITECTURAL DRAWING IS GIVEN IN CONFIDENCE. NO USE OR DISSEMINATION MAY BE MADE WITHOUT PRIOR WRITTEN CONSENT OF THE ARCHITECT. ALL COMMON LAW RIGHTS OF COPYRIGHT AND OTHERWISE ARE HEREBY SPECIFICALLY RESERVED.