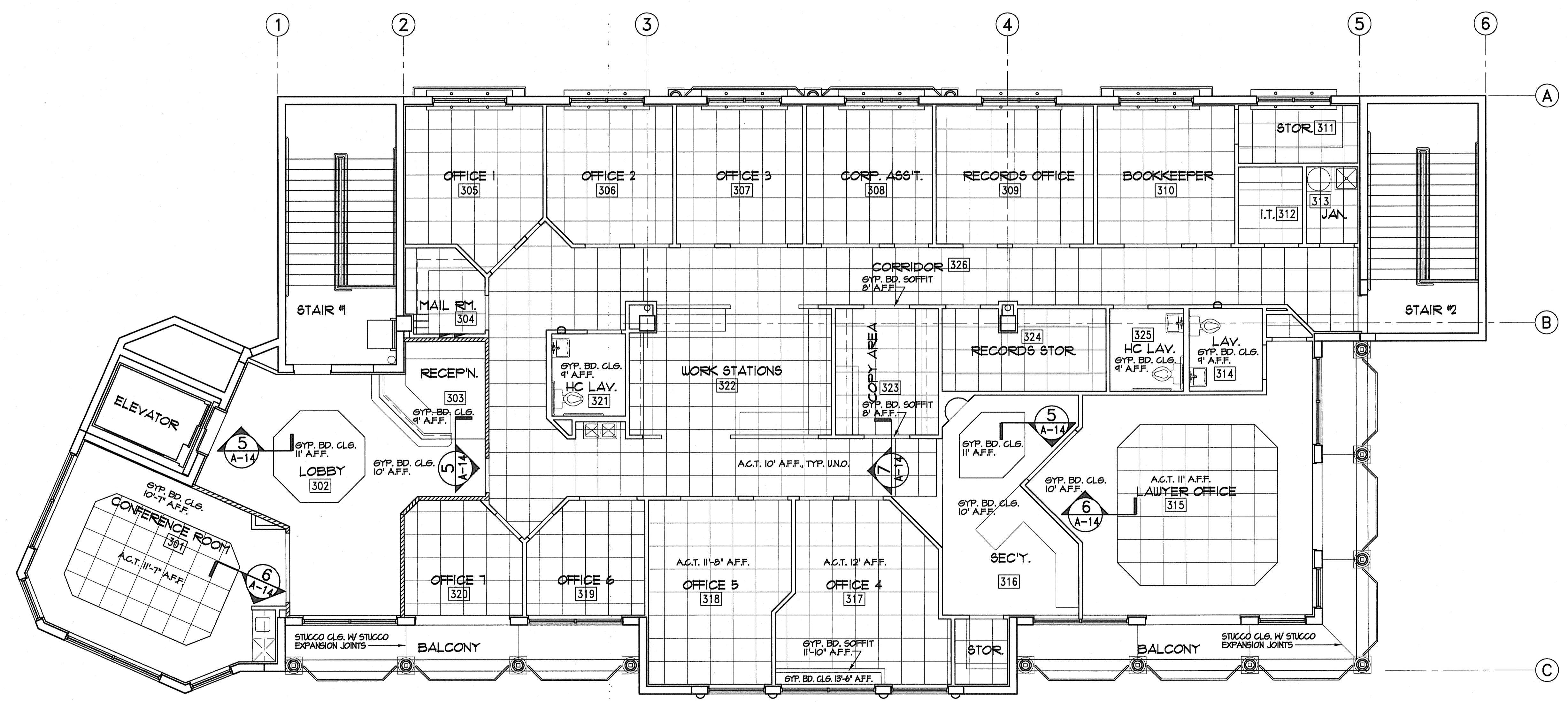


REVISIONS	BY

AD1 architectural design associates
 jeffrey d. gipspur
 ARCHITECT
 FLORIDA LICENSE NUMBER
 14400
 4250 professional center drive
 palm beach gardens, florida 33409
 jg@ad1.com



THIRD FLOOR CEILING PLAN

3/16" = 1'-0"
 NOTE: CEILING TILE TO BE ARMSTRONG "ULTIMA" SCRATCH RESISTANT ACOUSTICAL 24"x24" LAY IN CEILING TILE IN WHITE.
 SEE FINISH SCHEDULE BY INTERIOR DESIGNER FOR ADDITIONAL NOTES AND DETAILING FOR SPECIFIC ROOMS.

COPYRIGHTED 2011
 THIS ARCHITECTURAL DRAWING IS GIVEN IN CONFIDENCE.
 NO USE OR DISSEMINATION MAY BE MADE WITHOUT PRIOR
 WRITTEN CONSENT OF THE ARCHITECT. ALL COMMON LAW
 RIGHTS OF COPYRIGHT AND OTHERWISE ARE HEREBY
 SPECIFICALLY RESERVED.

THE PECK PLAZA
 12915 U.S. HIGHWAY ONE
 NORTH PALM BEACH, FLORIDA

DRAWN
 CHECKED
 DATE P.S. 1/20/11
 SCALE AS NOTED
 JOB NO.
 SHEET
A-19
 OF SHEETS