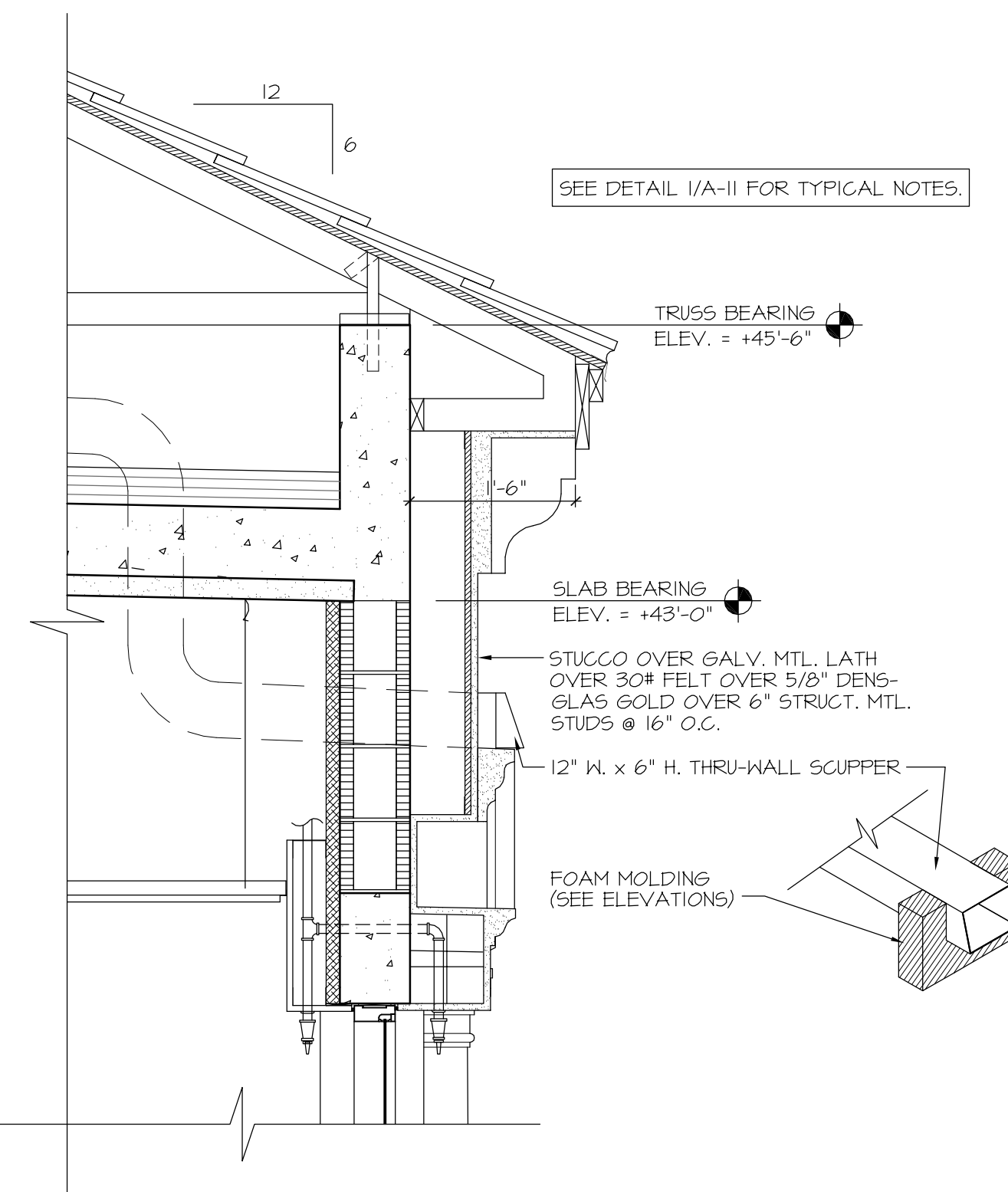
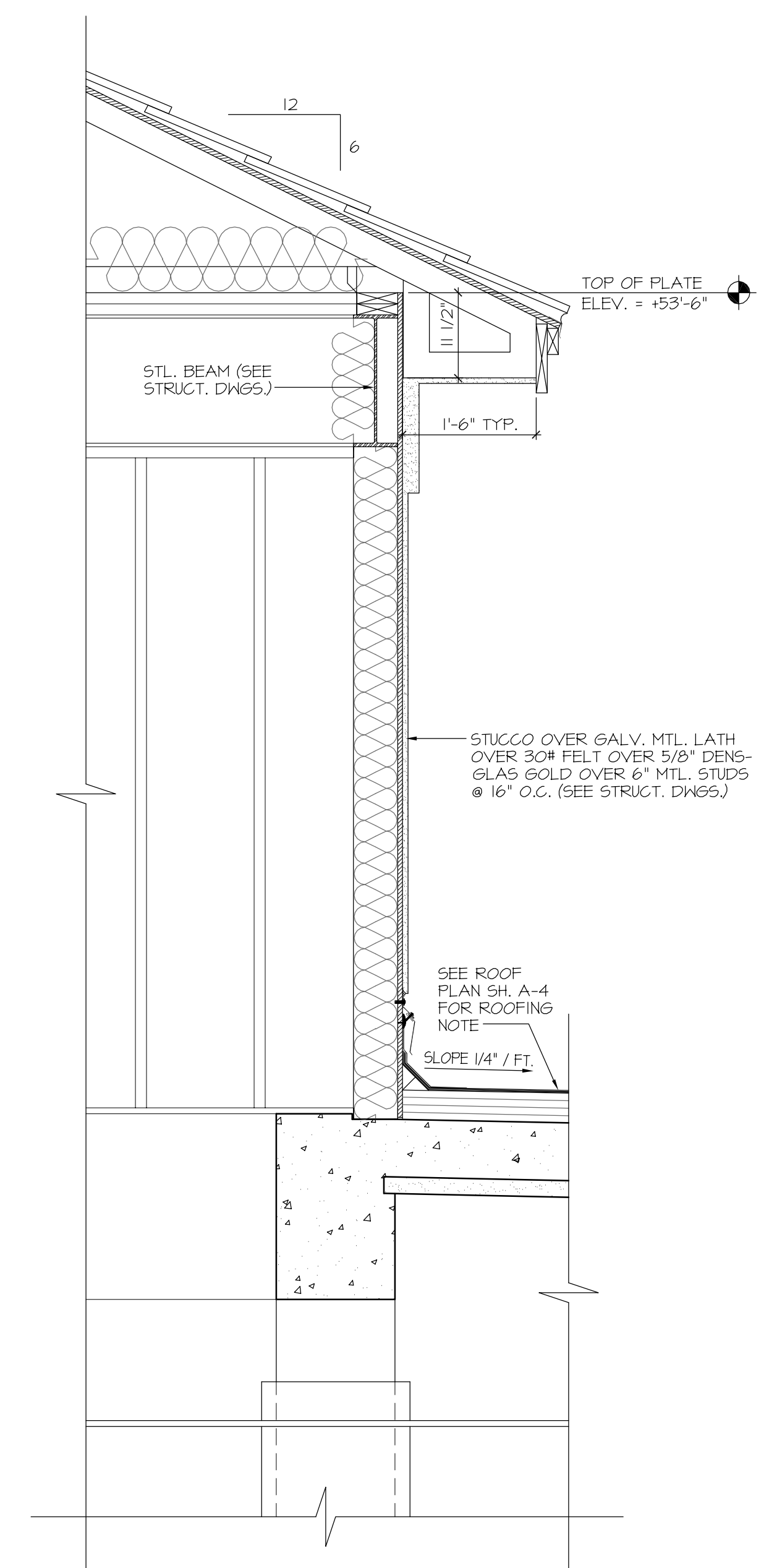


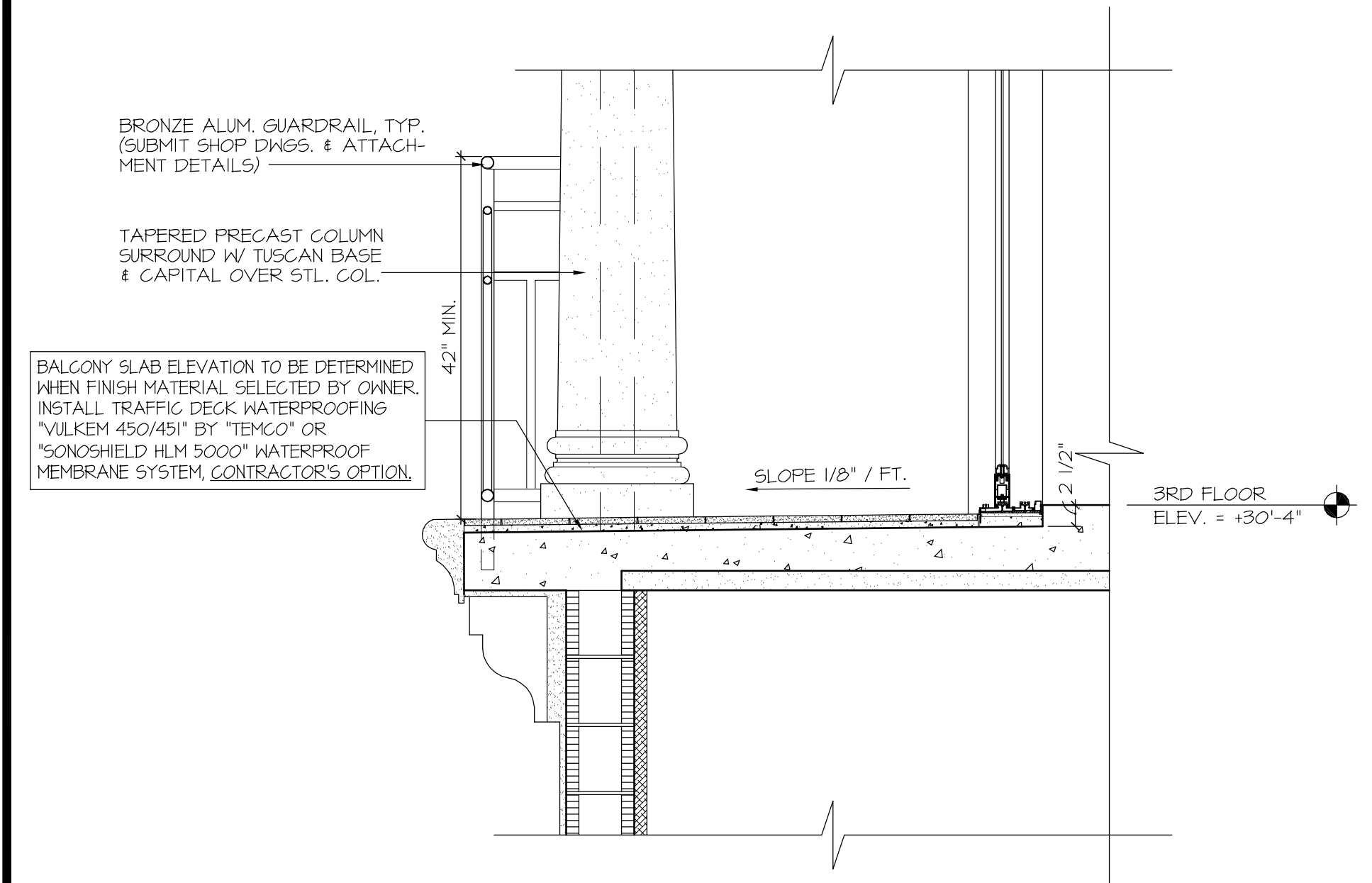
1 ROOF / WALL DETAIL
A-11 3/4" - 1'-0"



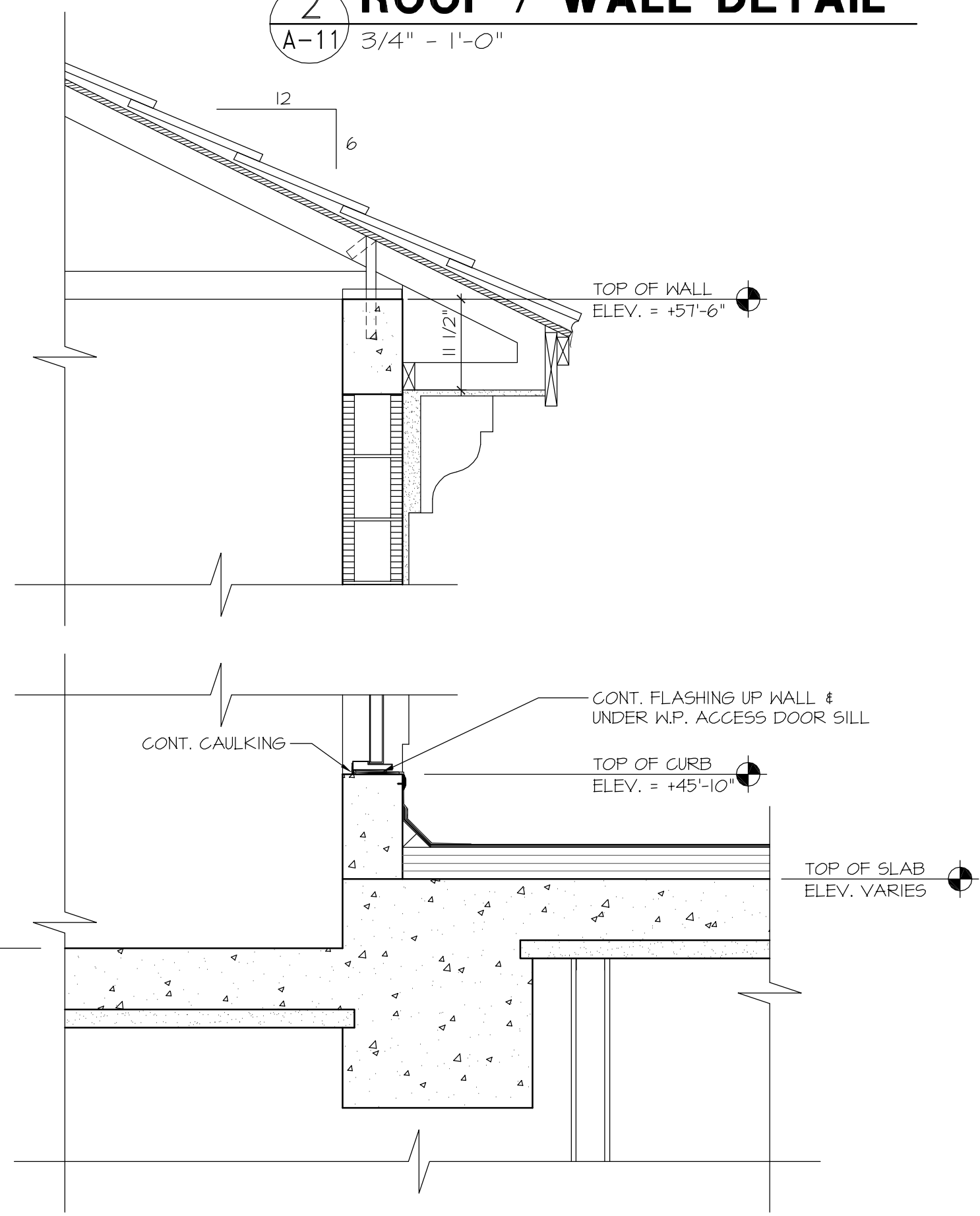
2 ROOF / WALL DETAIL
A-11 3/4" - 1'-0"



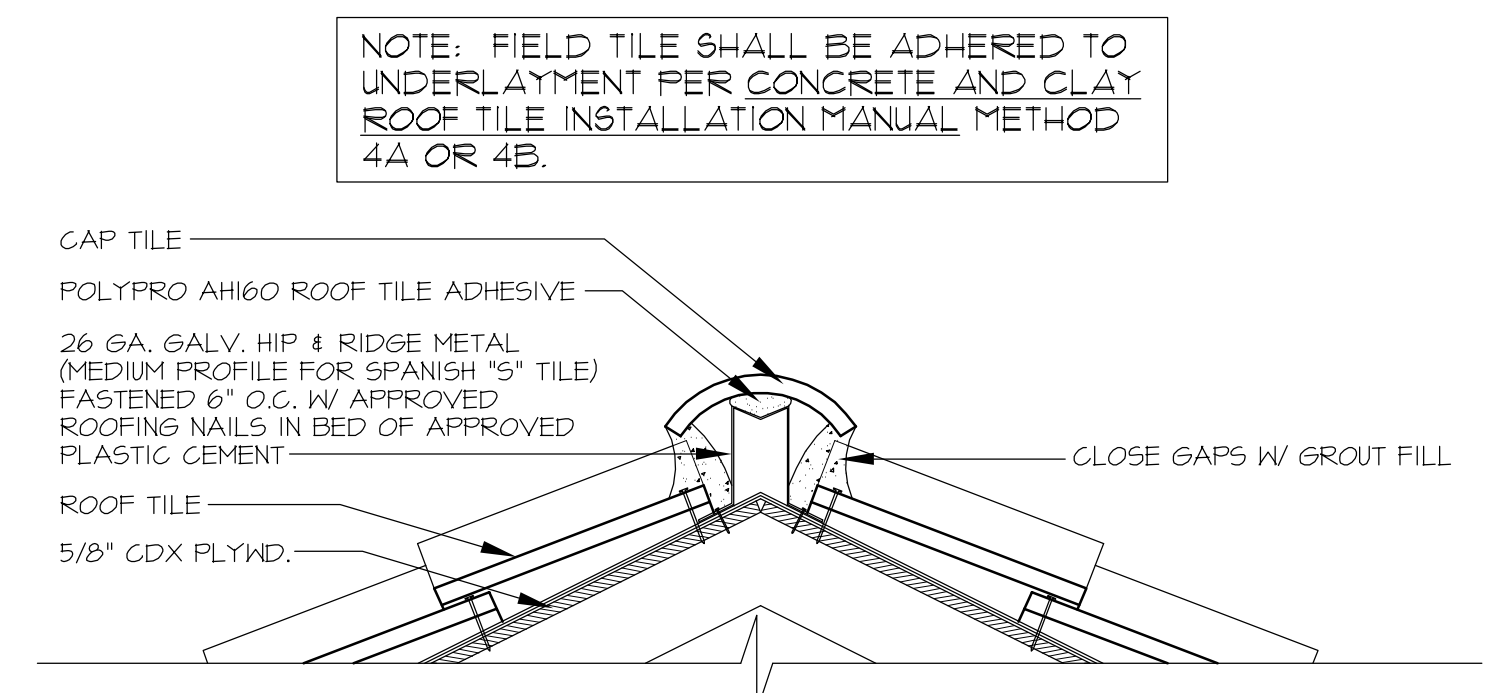
3 ROOF / WALL DETAIL
A-11 3/4" - 1'-0"



4 BALCONY DETAIL
A-11 3/4" - 1'-0"



5 ROOF / WALL DETAIL
A-11 3/4" - 1'-0"



6 HIP AND RIDGE DETAIL
A-11 1 1/2" = 1'-0"

COPYRIGHTED 2011
THIS ARCHITECTURAL DRAWING IS GIVEN IN CONFIDENCE. NO USE OR DISSEMINATION MAY BE MADE WITHOUT PRIOR WRITTEN CONSENT OF THE ARCHITECT. ALL COMMON LAW RIGHTS OF COPYRIGHT AND OTHERWISE ARE HEREBY SPECIFICALLY RESERVED.

REVISIONS	BY
6/23/11 - MISC. REVISIONS	

architectural design associates
jeffrey d. gappalar architect
FLORIDA LICENSE NUMBER 13614-446-1281
4290 professional center drive
suite 500
palm beach gardens, florida 33410
jg@adad.com

PECK PLAZA
1295 U.S. HIGHWAY ONE
NORTH PALM BEACH, FLORIDA

DRAWN
ONEOKED
DATE P.S. 1/20/11
SCALE AS NOTED
JOB NO.
SHEET
A-11
OF SHEETS