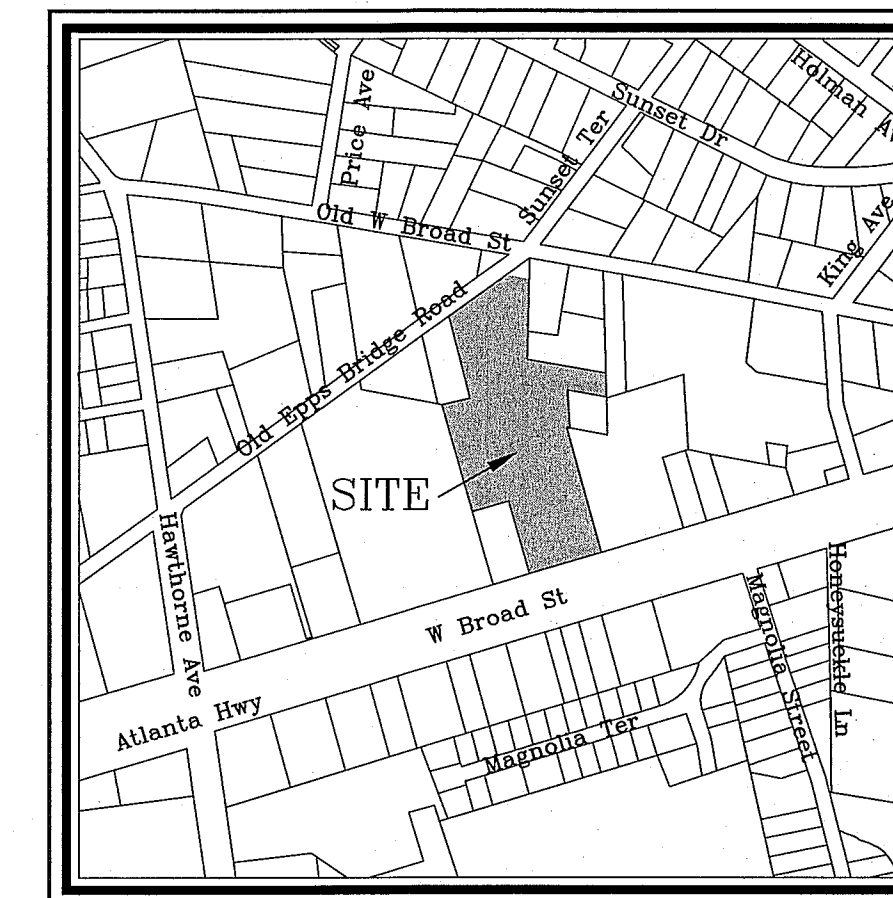
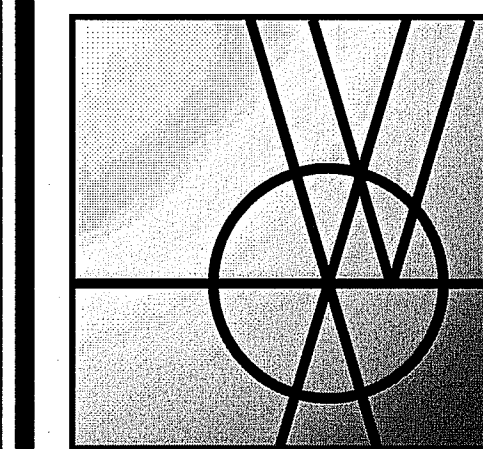


RETAINING WALL NOTES:

1. RETAINING WALLS TO BE CONSTRUCTED ON A PREPARED SUBGRADE. THE MINIMUM SOIL BEARING PRESSURE SHALL BE 3000 PSF.
2. CONCRETE SHALL HAVE A MINIMUM 28 DAY COMPRESSIVE STRENGTH OF 4000 PSI.
3. REINFORCING STEEL SHALL BE ASTM A615 GRADE 60.
4. PROVIDE 1" EXPANSION JOINTS AT 50 FOOT MAXIMUM SPACING. THE JOINT SHALL NOT EXTEND THROUGH THE FOOTING. THE JOINT SHALL BE CONSTRUCTED WITH A PREMOLDED JOINT FILLER, SHALL HAVE A WATER STOP ON THE EARTH SIDE, AND SHALL BE SEALED ON THE EXPOSED SIDE.
5. SUITABLE BACKFILL MATERIAL SHALL BE PLACED IN 6" MAXIMUM LIFTS AND COMPACTED TO 97% OF THE STANDARD PROCTOR DENSITY.
6. THE PREFORATED PIPES SHALL BE PLACED AT A MINIMUM GRADE OF 1 PERCENT AND SHALL HAVE A FREE OUTLET. THE PIPE SHALL BE WRAPPED WITH A FILTER FABRIC. THE PREFORATIONS SHALL BE ON THE BOTTOM.
7. REINFORCING STEEL SHALL HAVE A MINIMUM OF 2" CLEARANCE, UNLESS OTHERWISE NOTED.
8. PROVIDE CONSTRUCTION JOINT AT 40 FEET MAX. SPACING.



VICINITY MAP  
SCALE: 1" = 50'



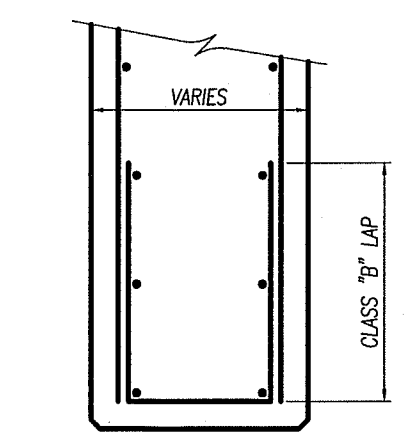
**Williams & Associates**

ENGINEERING • SURVEYING  
LANDSCAPE ARCHITECTURE

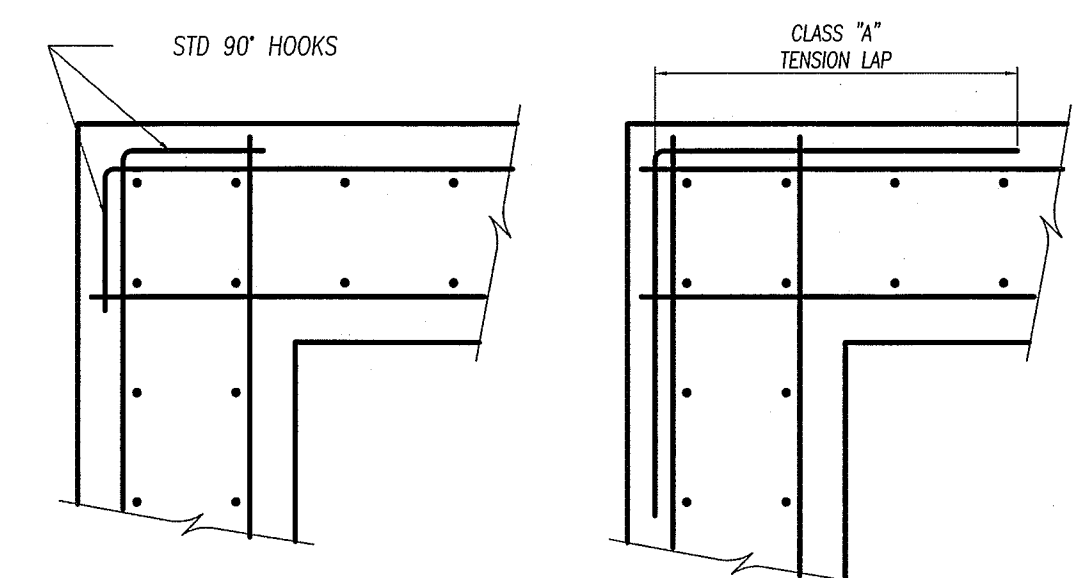
2470 Daniels Bridge Road, Suite 161  
Athens, Georgia 30606  
P. 706.310.0400  
F. 706.310.0411

www.gaplaning.com

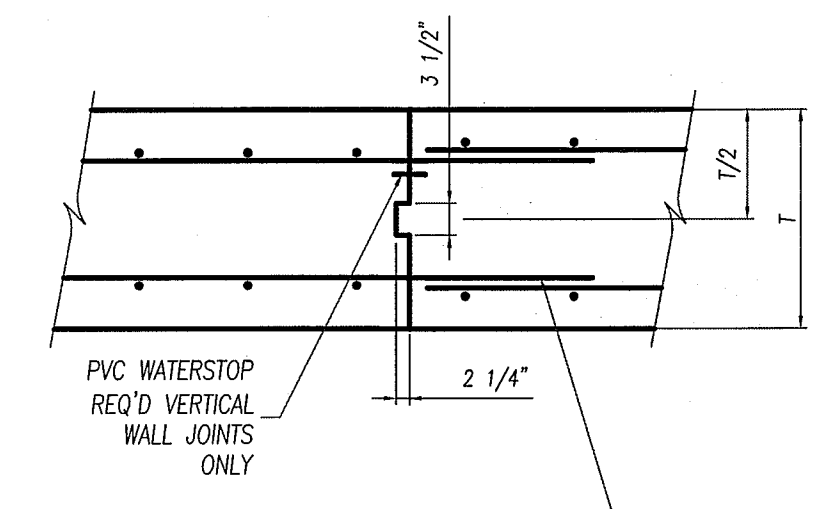
DIMENSIONS							REINFORCING					
A	B	C	D	E	F	G	a	b	c	d	e	f
0'-4"	0'-8"	0'-6"	2'-0"	3'-2"	1'-0"	N/A	#4 @ 12"	#4 @ 18"	#4 @ 18"	#4 @ 18"	#4 @ 12"	N/A
4'-6"	0'-8"	0'-6"	3'-0"	4'-2"	1'-0"	N/A	#4 @ 12"	#5 @ 12"	#4 @ 12"	#4 @ 12"	#4 @ 12"	N/A
6'-8"	0'-10"	1'-0"	4'-0"	5'-8"	1'-0"	1'-0"	#4 @ 12"	#5 @ 12"	#5 @ 12"	#5 @ 12"	#4 @ 12"	3-#4 BARS
8'-10"	1'-0"	1'-0"	6'-0"	8'-0"	1'-2"	1'-0"	#5 @ 12"	#6 @ 12"	#5 @ 12"	#5 @ 12"	#4 @ 12"	3-#4 BARS
10'-12"	1'-0"	1'-6"	7'-0"	9'-6"	1'-4"	1'-0"	#5 @ 12"	#6 @ 6"	#6 @ 12"	#5 @ 12"	#5 @ 12"	3-#4 BARS
12'-14"	1'-3"	1'-6"	9'-0"	11'-9"	1'-4"	1'-3"	#5 @ 12"	#6 @ 6"	#7 @ 12"	#5 @ 12"	#5 @ 12"	3-#4 BARS
14'-16"	1'-3"	2'-0"	10'-0"	13'-3"	1'-6"	1'-3"	#5 @ 12"	#7 @ 6"	#6 @ 6"	#5 @ 12"	#5 @ 12"	3-#4 BARS



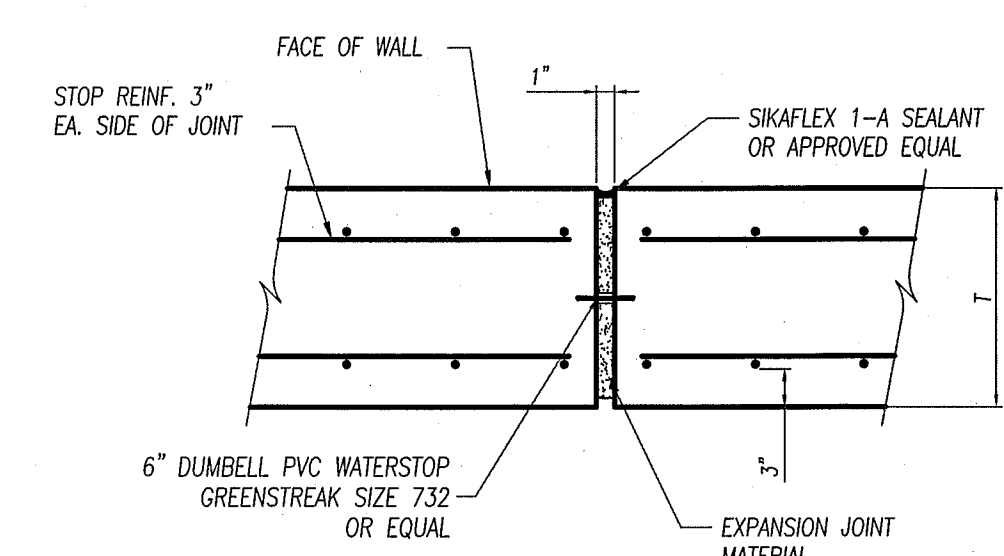
TYPICAL WALL END DETAIL  
NOT TO SCALE



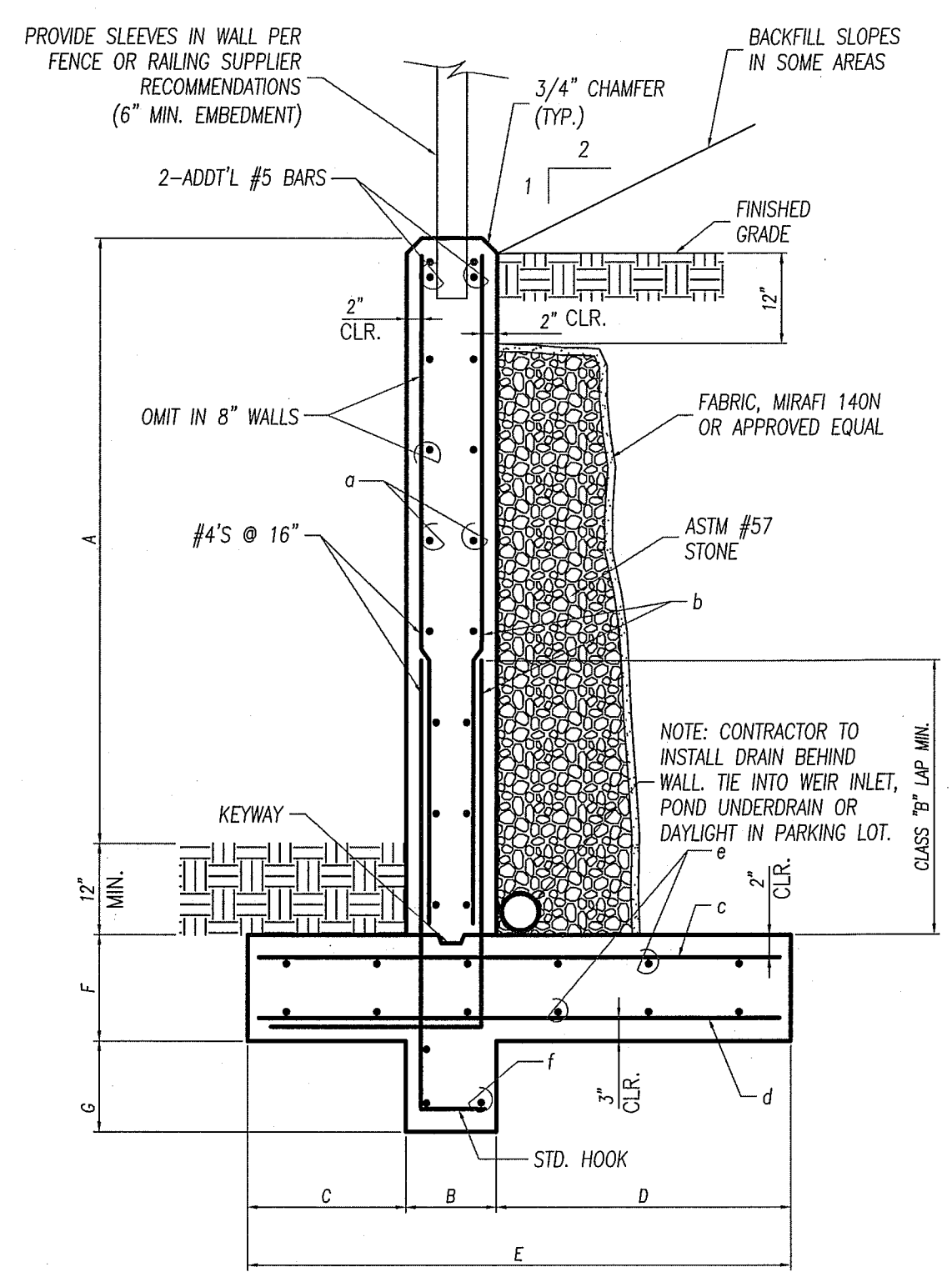
NOTE: SINGLE CURTAIN DETAIL SIMILAR.  
TYPICAL DOUBLE CURTAIN CORNER DETAIL  
NOT TO SCALE



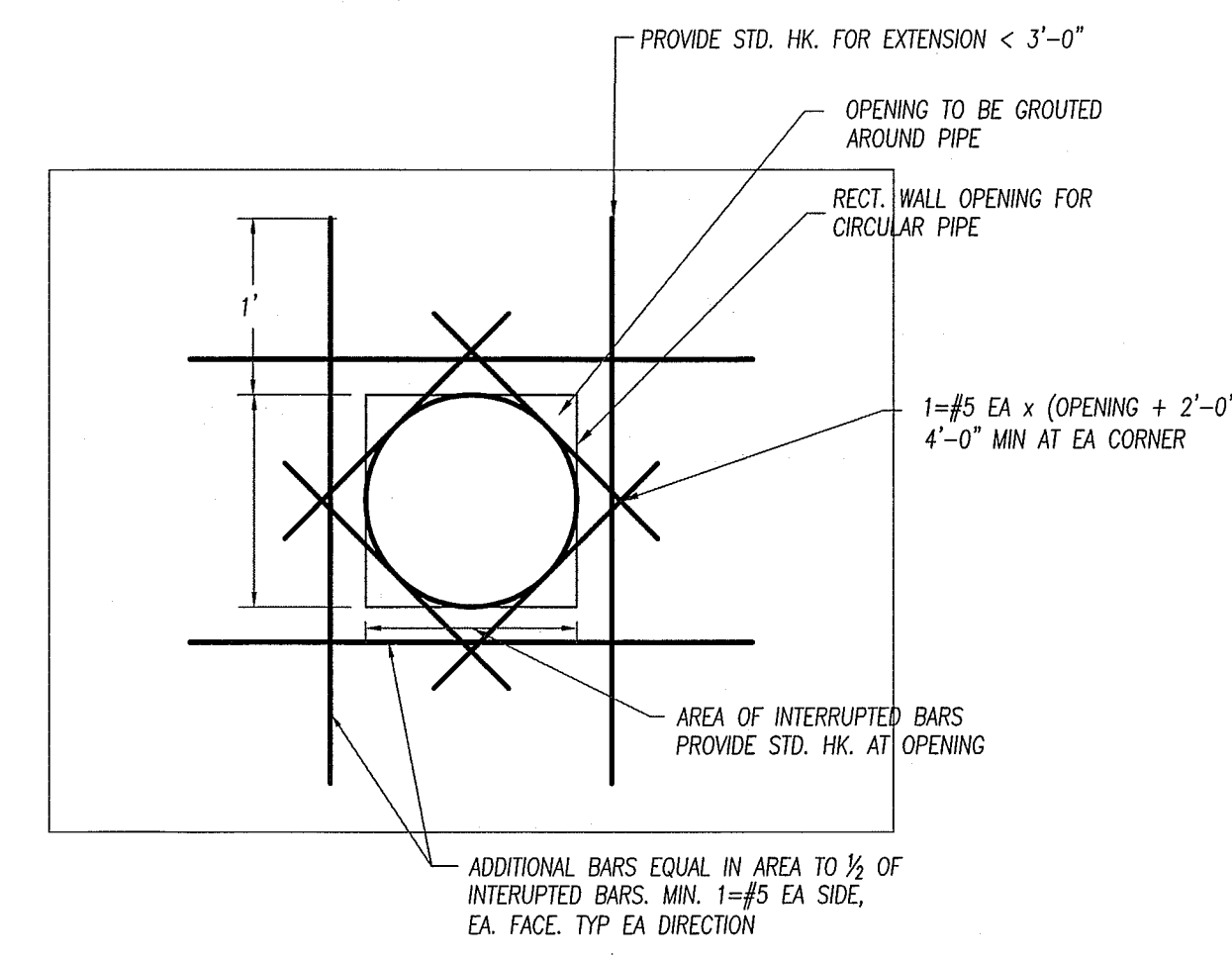
TYPICAL CONSTRUCTION JOINT DETAIL  
NOT TO SCALE



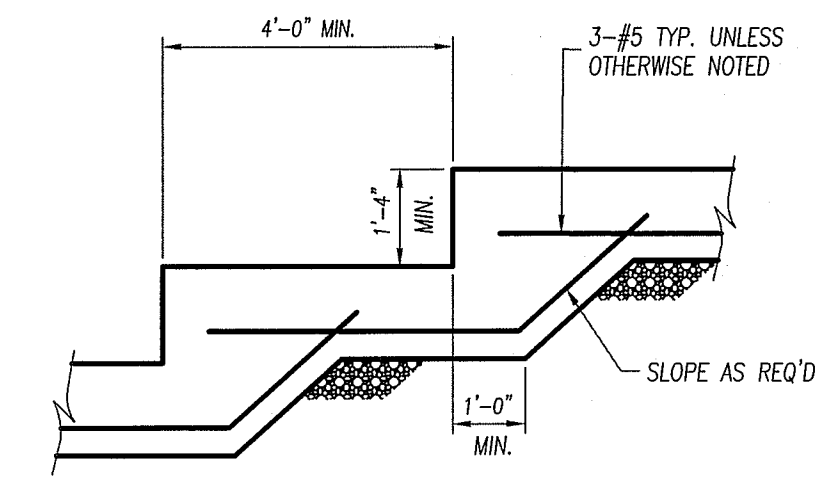
TYPICAL EXPANSION JOINT DETAIL  
NOT TO SCALE



TYPICAL RETAINING WALL SECTION  
NOT TO SCALE



TYPICAL WALL OPENING DETAIL  
NOT TO SCALE



TYPICAL FOOTING STEP DETAIL  
NOT TO SCALE

**ATHENS MEDICAL  
COMPLEX**  
ATHENS-CLARKE COUNTY, GEORGIA  
4.425 ACRES - WEST BROAD STREET

DATE: 03/01/2011

REVISIONS

DATE	COMMENT
03/01/11	Per generator pad and enclosure addition and planning comments.
04/29/11	Per field change to bioretention pond.
05/12/11	Per ACCPW comments on field change to bioretention pond.



ALL DRAWINGS SHALL REMAIN THE PROPERTY OF WILLIAMS & ASSOCIATES. THESE INSTRUMENTS OF SERVICE ARE TO BE USED SOLELY FOR THIS SPECIFIC PROJECT. WILLIAMS & ASSOCIATES SHALL RETAIN ALL LEGAL RIGHTS TO THE USE OF THE INSTRUMENTS OF SERVICE AND SHALL RETAIN FULL PROTECTION UNDER UNITED STATES COPYRIGHT LAW.

10047

WALL DETAILS

20.1

REVIEW SET □ BID SET □ CONSTRUCTION SET