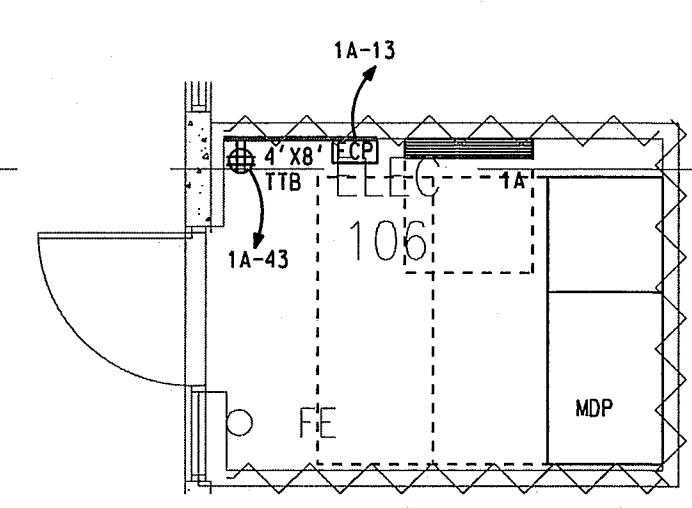


PANELBOARD SCHEDULES

PANEL: MDP		TYPE: OED		MOUNTING: SURFACE		AMPS S. I. C.: 65000		SERVICE: UTILITY TRANS.		FEEDER No. 24	
VOLTAGE: 120/208V 3P-4W		MAINS: 3000A MCB *		SECTIONS: 2							
AMPS/PLS.	FDR NO.	SERVES	CKT. NO.	POLE NO.	PHASE KW	POLE NO.	CKT. NO.	SERVES	FDR NO.	AMPS/PLS.	
			A	B	C						
300	3	P2 PANEL 1A	21.44	1	35.84	---	2	14.40	L1	175	3
			18.23	3	---	---	4	14.40			
			23.57	5	---	---	6	14.40			
225	3	N1 RTU-1	25.89	7	25.89	---	8	0.00		1200	3
			25.89	9	---	---	10	0.00			
			25.89	11	---	---	12	0.00			
100	3	SPACE ONLY	0.00	13	0.00	---	14	0.00		225	3
		FUTURE ATS LS	0.00	15	---	---	16	0.00			
			0.00	17	---	---	18	0.00			
225	3	SPACE ONLY	0.00	19	0.00	---	20	0.00		225	3
		FUTURE ATS CR	0.00	21	---	---	22	0.00			
			0.00	23	---	---	24	0.00			
800	3	SPACE ONLY	0.00	25	0.00	---	26	0.00		400	3
		FUTURE ATS ED	0.00	27	---	---	28	0.00			
			0.00	29	---	---	30	0.00			
400	3	SPACE ONLY	0.00	31	0.00	---	32	0.00		400	3
		FUTURE NA	0.00	33	---	---	34	0.00			
			0.00	35	---	---	36	0.00			
400	3	SPACE ONLY	0.00	37	0.00	---	38	0.00		400	3
		FUTURE NB	0.00	39	---	---	40	0.00			
			0.00	41	---	---	42	0.00			
* 100% RATED			TOTALS:	61.73	58.52	63.86					
			TOTAL:	184.11							



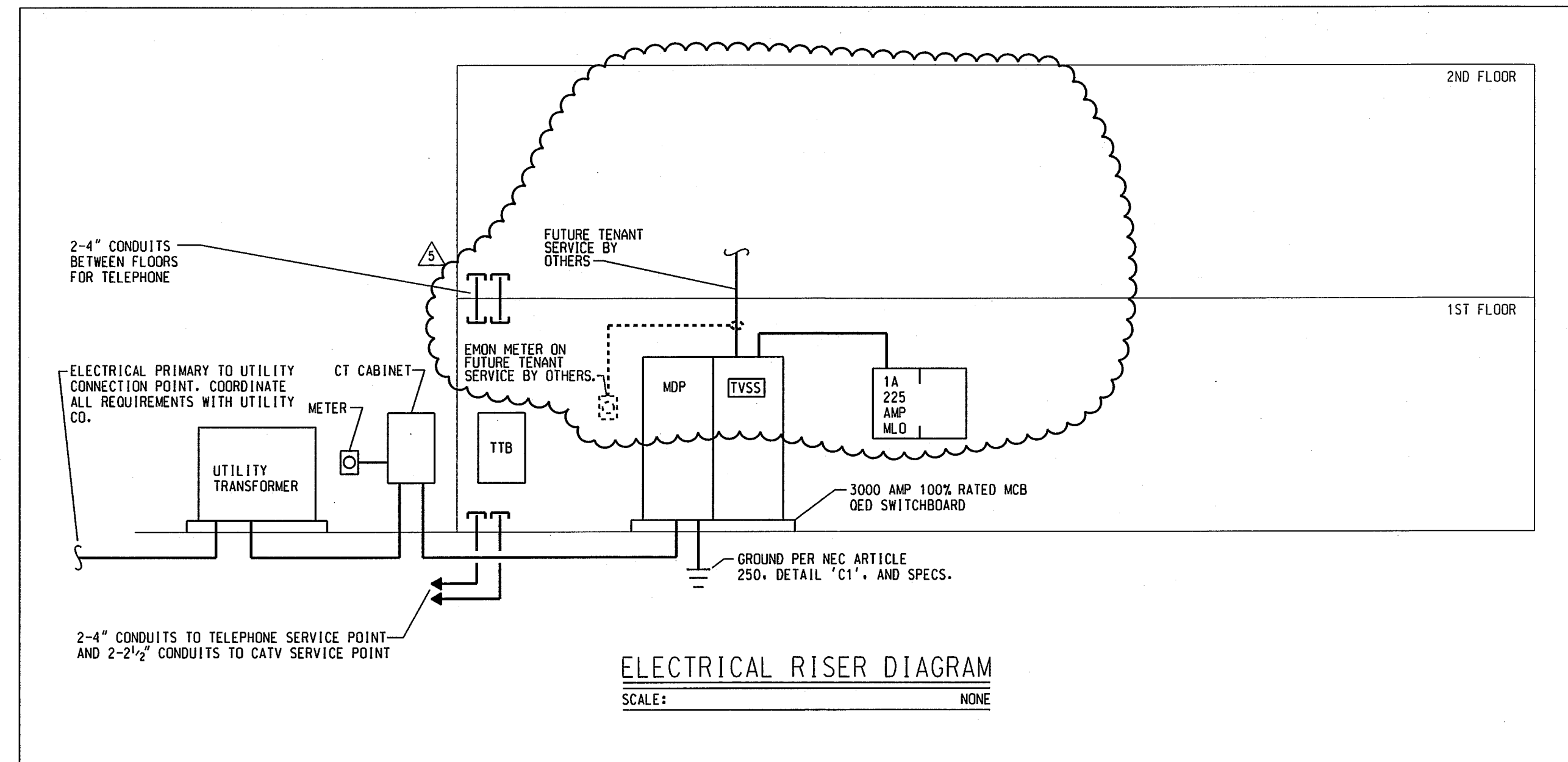
PANEL: 1A		TYPE: MOOD		MOUNTING: SURFACE		AMPS S. I. C.: 22000		SERVICE: PANEL MDP		FEEDER No. P2		
VOLTAGE: 120/208V 3P-4W		MAINS: 300A M.D.		SECTIONS: 1								
AMPS/PLS.	FDR NO.	SERVES	CKT. NO.	POLE NO.	PHASE KW	POLE NO.	CKT. NO.	SERVES	FDR NO.	AMPS/PLS.		
			A	B	C							
20	1	A2 LIGHTING EXTERIOR	0.78	1	1.22	---	2	0.44	EF-1	A3	15	3
20	1	A2 LIGHTING EXTERIOR	0.36	3	---	---	4	0.44				
20	1	A2 LIGHTING 1ST FL	1.28	5	---	---	6	0.44				
20	1	A2 LIGHTING 2ND FL	0.80	7	4.10	---	8	3.60	AC-1	C2	40	3
20	1	SPARE	0.80	9	---	---	10	3.60				
20	1	A2 DOOR LOCK SYSTEM	1.00	11	---	---	12	3.60				
20	1	A2 FIRE ALARM	1.00	13	1.00	---	14	8.00	SPARE		40	3
20	1	A2 RECEPTS 1ST	0.36	15	---	---	16	8.00				
20	1	A2 RECEPTS 1ST	0.54	17	---	---	18	8.00				
20	1	A2 RECEPTS SUMP PUMP	0.18	19	1.12	---	20	0.94				
20	1	A2 RECEPTS PIT	0.36	21	---	---	22	0.94				
20	1	A2 SIGN	1.20	23	---	---	24	8.00	SPARE		15	2
20	1	A2 SIGN	1.20	25	---	---	26	8.00				
20	1	A2 SIGN	1.20	27	---	---	28	0.00				
20	1	A2 ELEVATOR CAB	1.00	29	---	---	30	1.43	CU-3/AC-3	A2	20	2
20	1	A2 RECEPTS ELEV ED	0.18	31	1.61	---	32	1.43				
20	1	A2 RECEPTS 2ND	0.54	33	---	---	34	0.94	RECEPTS BOOE	A2	20	1
20	1	SPARE	0.80	35	---	---	36	8.00	SPARE		25	2
20	1	SPARE	0.80	37	0.80	---	38	8.00				
20	1	A2 RECEPTS EXTERIOR	0.72	39	---	---	40	8.00	SPARE		30	2
20	1	A2 RECEPTS EXTERIOR	0.72	41	---	---	42	8.00				
20	1	A2 RECEPTS TTB	0.36	43	1.86	---	44	1.50	EF-1	A2	20	4
20	2	C1 SITE LIGHTING	0.93	45	---	---	46	1.50				
20	2	C1 SITE LIGHTING	0.93	47	---	---	48	1.50	EUM-2	A2	20	2
20	2	C1 SITE LIGHTING	0.47	49	1.97	---	50	1.50				
20	2	C1 SITE LIGHTING	0.47	51	---	---	52	0.00	SPACE ONLY		20	1
20	2	C1 SITE LIGHTING	1.16	53	---	---	54	0.00	SPACE ONLY		20	1
20	2	C1 SITE LIGHTING	1.16	55	1.16	---	56	0.00	SPACE ONLY		20	1
20	2	C1 SITE LIGHTING	0.93	57	---	---	58	0.00	SPACE ONLY		20	1
20	2	C1 SITE LIGHTING	0.93	59	---	---	60	0.00	SPACE ONLY		20	1
20	1	A2 IRRIGATION CONTROLS	0.50	61	0.50	---	62	0.00	SPACE ONLY		20	1
20	1	SPARE	0.00	63	---	---	64	0.00	SPACE ONLY		20	1
20	1	SPARE	0.00	65	---	---	66	0.00	SPACE ONLY		20	1
20	1	SPARE	0.00	67	0.00	---	68	0.00	SPACE ONLY		20	1
20	1	SPARE	0.00	69	---	---	70	0.00	SPACE ONLY		20	1
20	1	SPARE	0.00	71	---	---	72	0.00	SPACE ONLY		20	1
20	1	SPARE	0.00	73	0.00	---	74	0.00	SPACE ONLY		20	1
20	1	SPARE	0.00	75	---	---	76	0.00	SPACE ONLY		20	1
20	1	SPARE	0.00	77	---	---	78	0.00	SPACE ONLY		20	1
20	1	SPARE	0.00	79	0.00	---	80	0.00	SPACE ONLY		20	1
20	1	SPARE	0.00	81	---	---	82	0.00	SPACE ONLY		20	1
20	1	SPARE	0.00	83	---	---	84	0.00	SPACE ONLY		20	1
TOTALS:			15.24	13.25	15.84							
TOTAL:			44.33									

LOAD SUMMARY

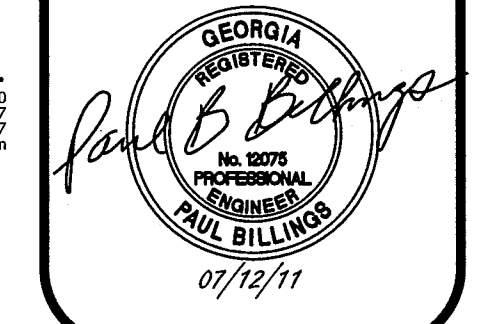
PANEL: MDP - 208 VOLTS, 3 PHASE				
LOAD TYPE	CONNECTED K.W.	DEMAND FACTOR	DEMAND K.W.	PHASE AMPS
LIGHTING	12.18	1.00	12.18	33.81
RECEPTACLES	6.12	---	6.12	16.99
MISC.	5.60	1.00	5.60	15.54
HEATING	6.00	1.00	6.00	16.65
COOLING	102.41	1.00	102.41	284.26
ELEVATORS	43.20	1.00	43.20	119.91
WATER HEATERS	8.60	1.00	8.60	23.87
TOTAL	184.11	---	184.11	511.04
MINIMUM FEEDER AMPS = 1.00 X 511.04 = 511.04				
FEEDER AMPS USED = 3000				

BRANCH CIRCUIT AND FEEDER LEGEND

FEEDER NO.	CONDUIT AND WIRE
AA	AS NOTED ON PLANS
A2	1/2" - 2 #12 & #12 GND.
A3	3/4" - 3 #12 & 1 #12 GND.
B1	3/4" - 2 #10 & 1 #10 GND.
B2	3/4" - 3 #10 & 1 #10 GND.
C1	1" - 2 #8 & 1 #6 GND.
L1	2" - 3 #2/0 & 1 #6 GND.
N1	2" - 3 #4/0 & 1 #4 GND.
N2	2 1/2" - 4 #4/0 & 1 #4 GND.
P2	3" - 4 #350MCM & 1 #4 GND.
V2	4 PARALLEL 3" - 4 #350MCM & 1 #3/0 GND.
Z4	8 PARALLEL 3 1/2" - 4 #500MCM



ELECTRICAL RISER DIAGRAM  
SCALE: NONE



ATHENS MEDICAL PLAZA I  
2142 WEST BROAD STREET  
ATHENS, GEORGIA  
ATHENS, GEORGIA

THIS DOCUMENT CONTAINS INFORMATION THAT IS PROPRIETARY TO DAVIS STOKES COLLABORATIVE, P.C. ANY REUSE OR DISSEMINATION OF THIS DOCUMENT OR ITS CONTENTS MAY NOT BE PERMITTED WITHOUT THE WRITTEN CONSENT OF DAVIS STOKES COLLABORATIVE, P.C. COPYRIGHT 2007. ALL RIGHTS RESERVED.

DAVIS STOKES COLLABORATIVE, P.C.  
A . R . C . H . I . T . E . C . T . S  
7121 CROSSROADS BLVD. BRENTWOOD, TENNESSEE 37027  
TEL: 615-726-0010  
FAX: 615-726-2090  
http://www.dsccol.com  
EMAIL: dsccol@dsccol.com

REVISION		
NO.	DATE	DESCRIPTION
1	05/06/11	REVISION #3
2	06/21/11	REVISION #4
3	7/12/11	REVISION #5