

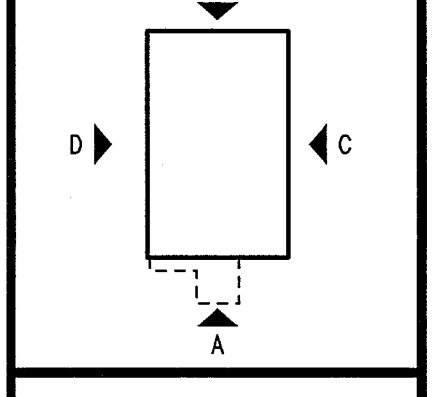
ATHENS MEDICAL PLAZA I
2142 WEST BROAD STREET
ATHENS, GEORGIA

THIS DRAWING CONTAINS INFORMATION THAT IS PROPRIETARY TO DAVIS, STOKES COLLABORATIVE AND FOR ITS DOCUMENT AND/OR ITS CONTENTS MAY NOT BE REPRODUCED OR TRANSMITTED IN ANY FORM OR BY ANY MEANS, ELECTRONIC OR MECHANICAL, INCLUDING PHOTOCOPYING, RECORDING, OR BY ANY INFORMATION STORAGE AND RETRIEVAL SYSTEM, WITHOUT THE PRIOR WRITTEN PERMISSION OF DAVIS, STOKES COLLABORATIVE, P.C. COPYRIGHT 2007. ALL RIGHTS RESERVED.

DAVIS · STOKES
COLLABORATIVE, P.C.
A · R · C · H · I · T · E · C · T · S

7121 CROSSROADS BLVD. BRENTWOOD, TENNESSEE 37027 TEL: 615-726-0010
 http://www.dsccol.com EMAIL: dsccol@dsccol.com FAX: 615-726-2090

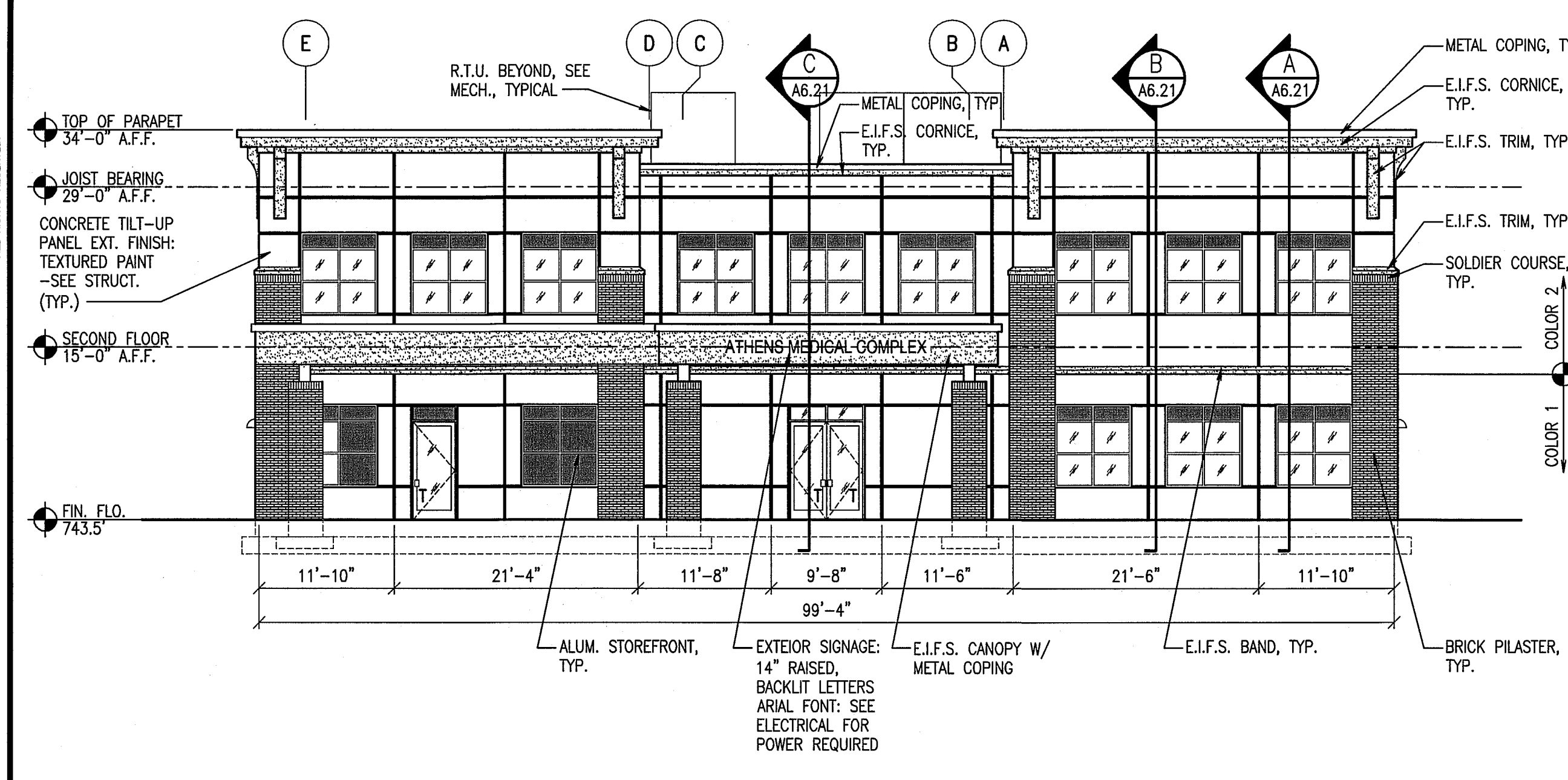
REVISION		
NO.	DATE	DESCRIPTION
1	02/05/11	REVISION 1



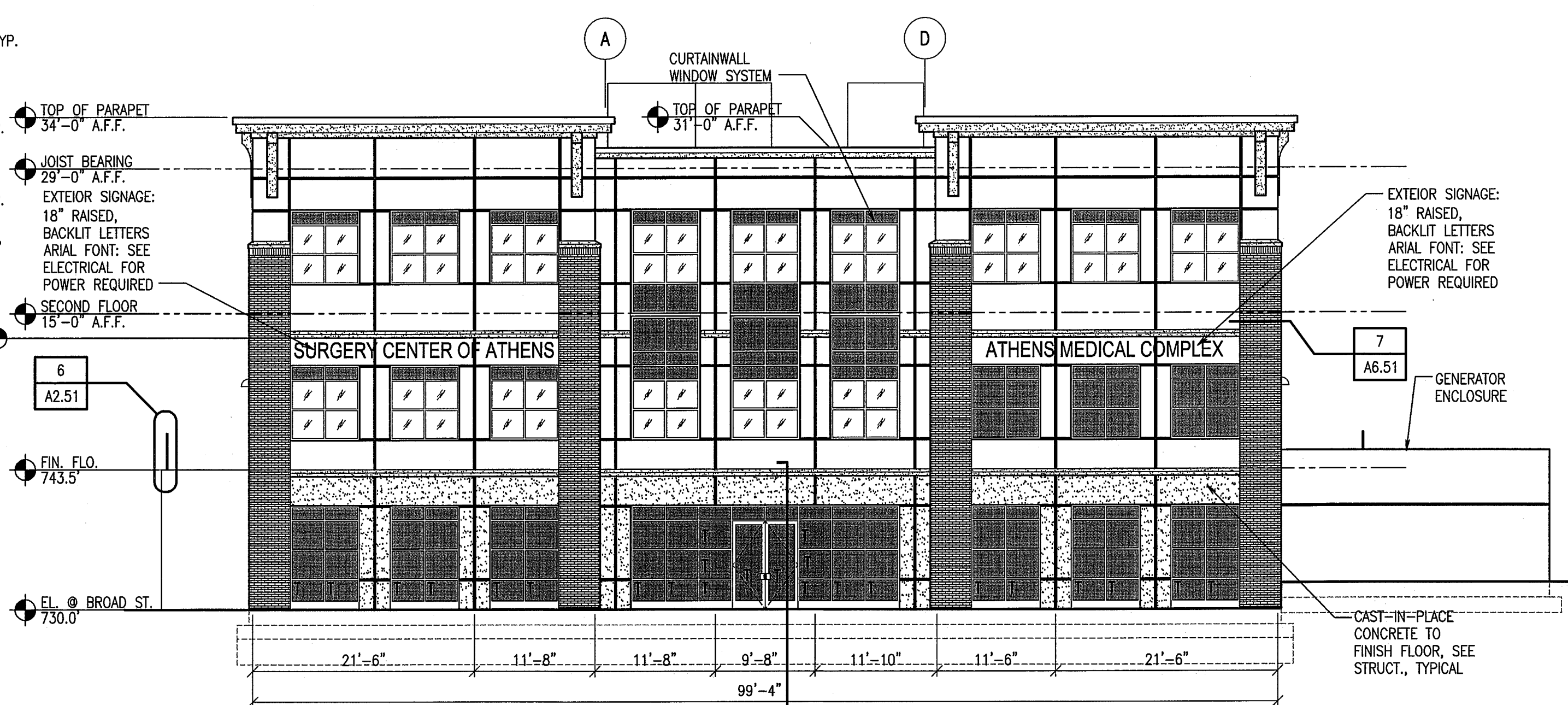
A5.01

ISSUE DATE: 12.21.10 JOB NUMBER: 08004

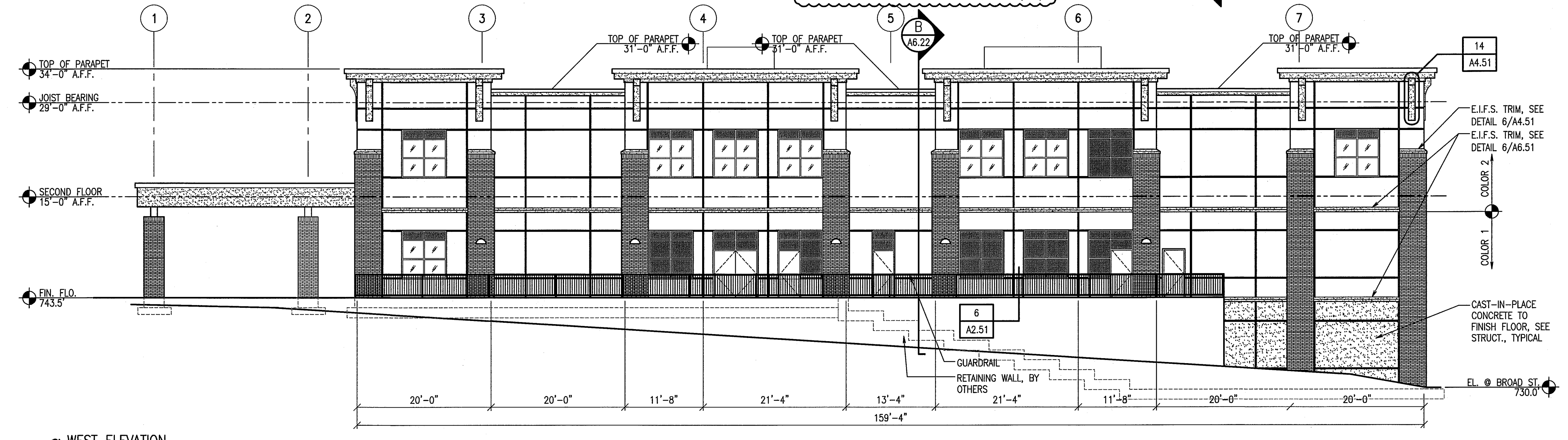
DRAWING CREATED: 11/3/2010 1:46 PM
 DRAWING UPDATE: 6/29/2008 11:03 AM
 PLOT DATE: 08/04/2010 09:49
 FILE NAME: 08004_A5.01.dwg
 SCALE FACTOR: 1.00



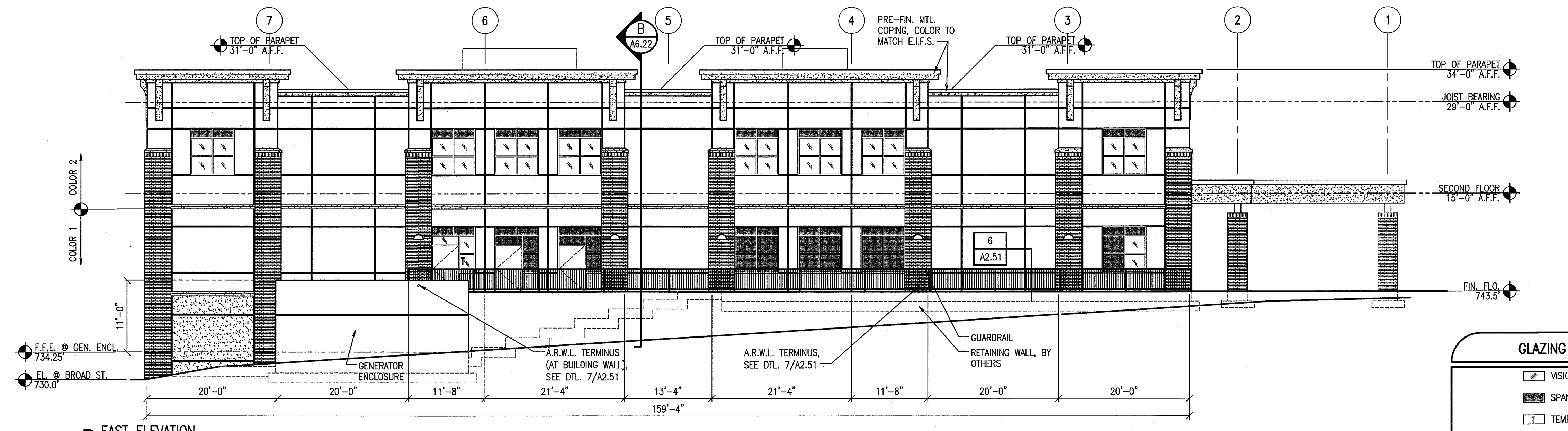
A NORTH ELEVATION



B SOUTH ELEVATION
 TOTAL SQUARE FEET FACADE = 4,245 SF
 TOTAL SQUARE FEET OPENINGS = 1,677 SF (40%)



C WEST ELEVATION



D EAST ELEVATION

GLAZING LEGEND	
	VISION PANEL
	SPANDEL PANEL
	TEMPERED PANEL

EXTERIOR ELEVATIONS

