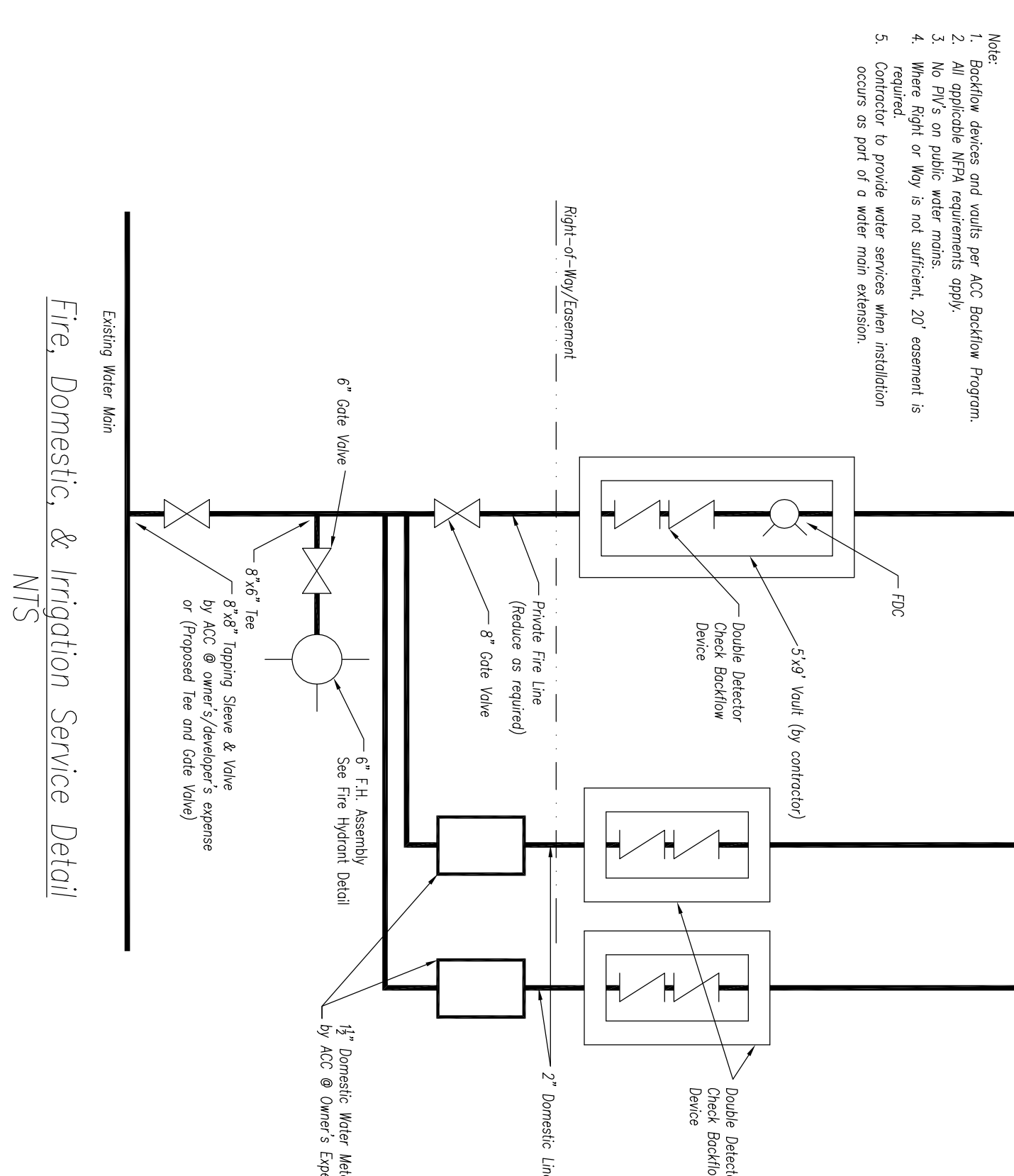
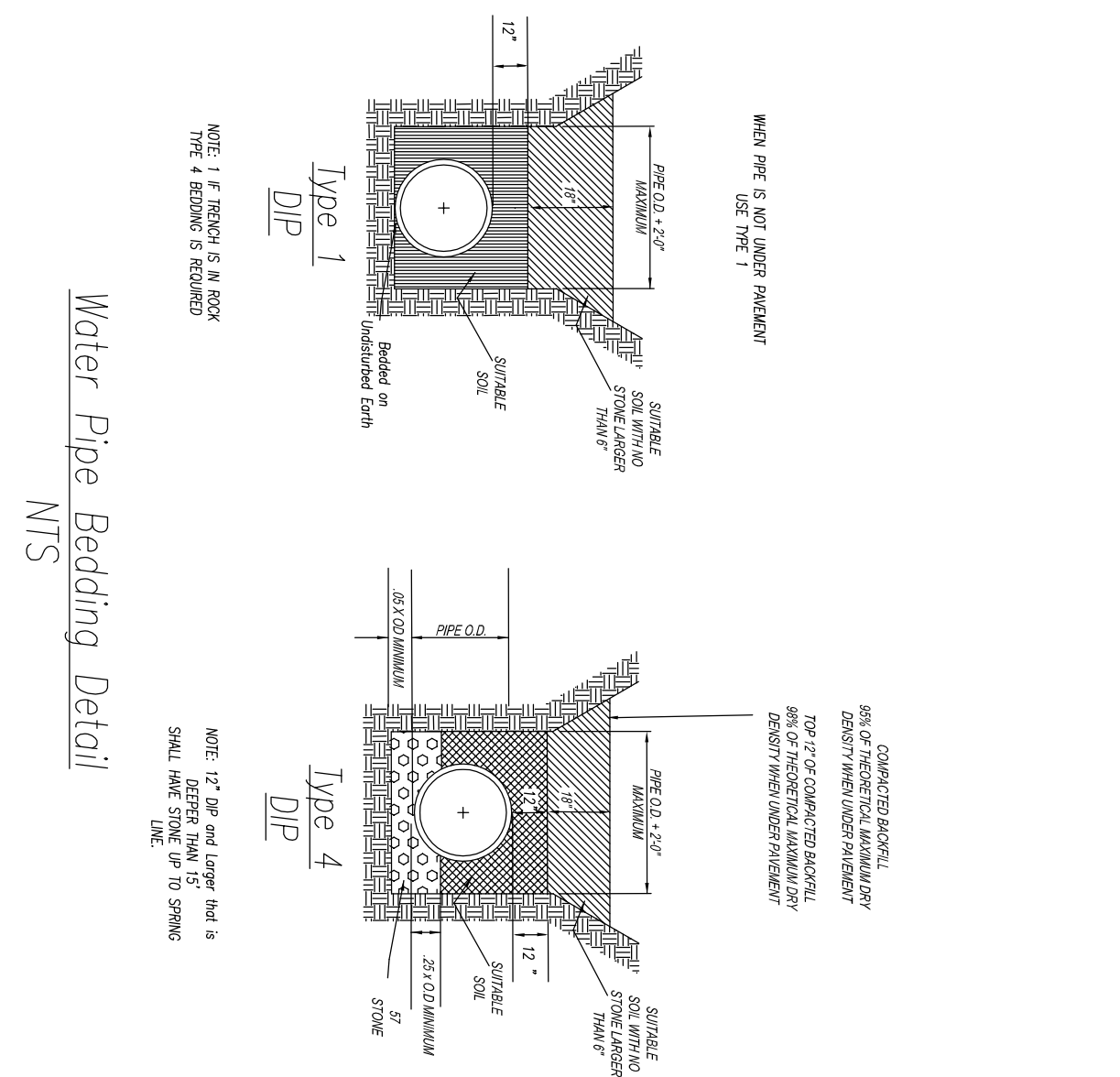


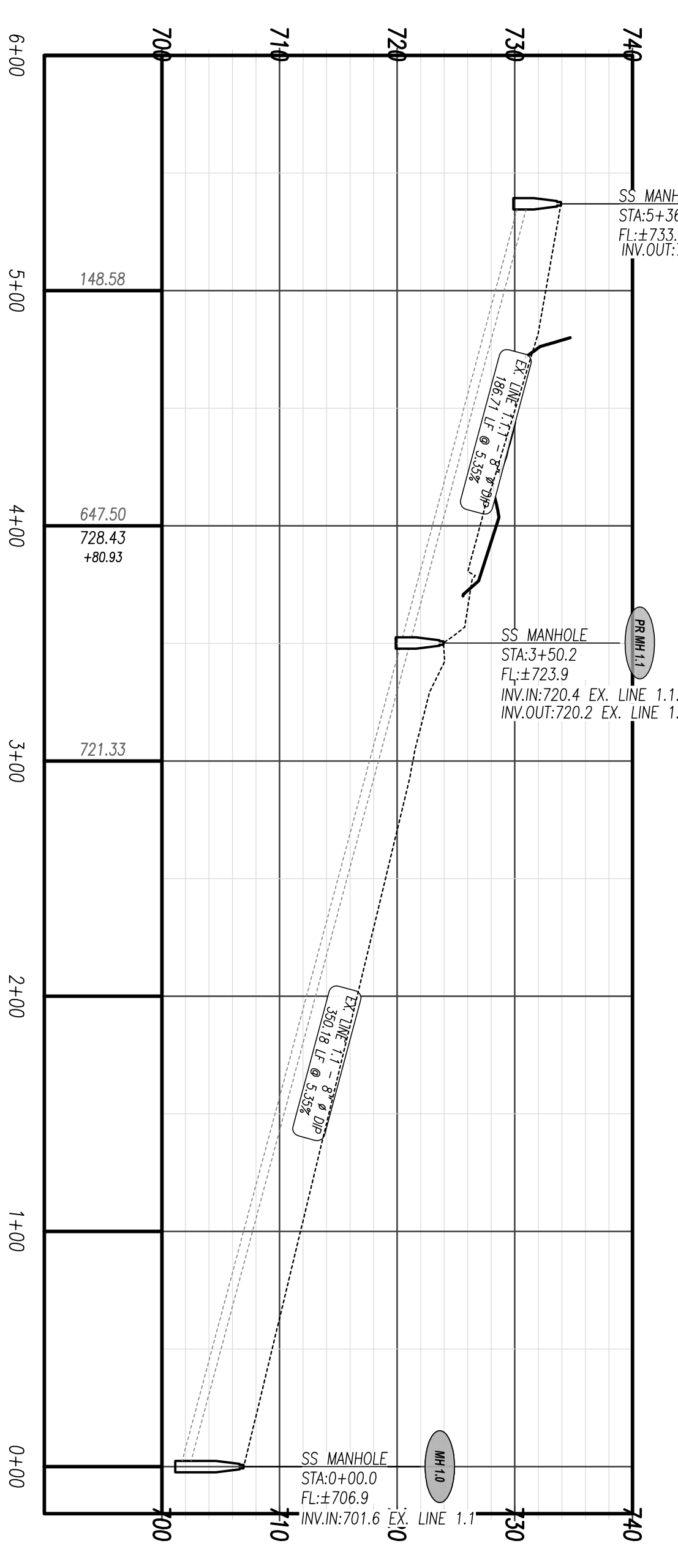
For Connection on Old Epps Bridge Road



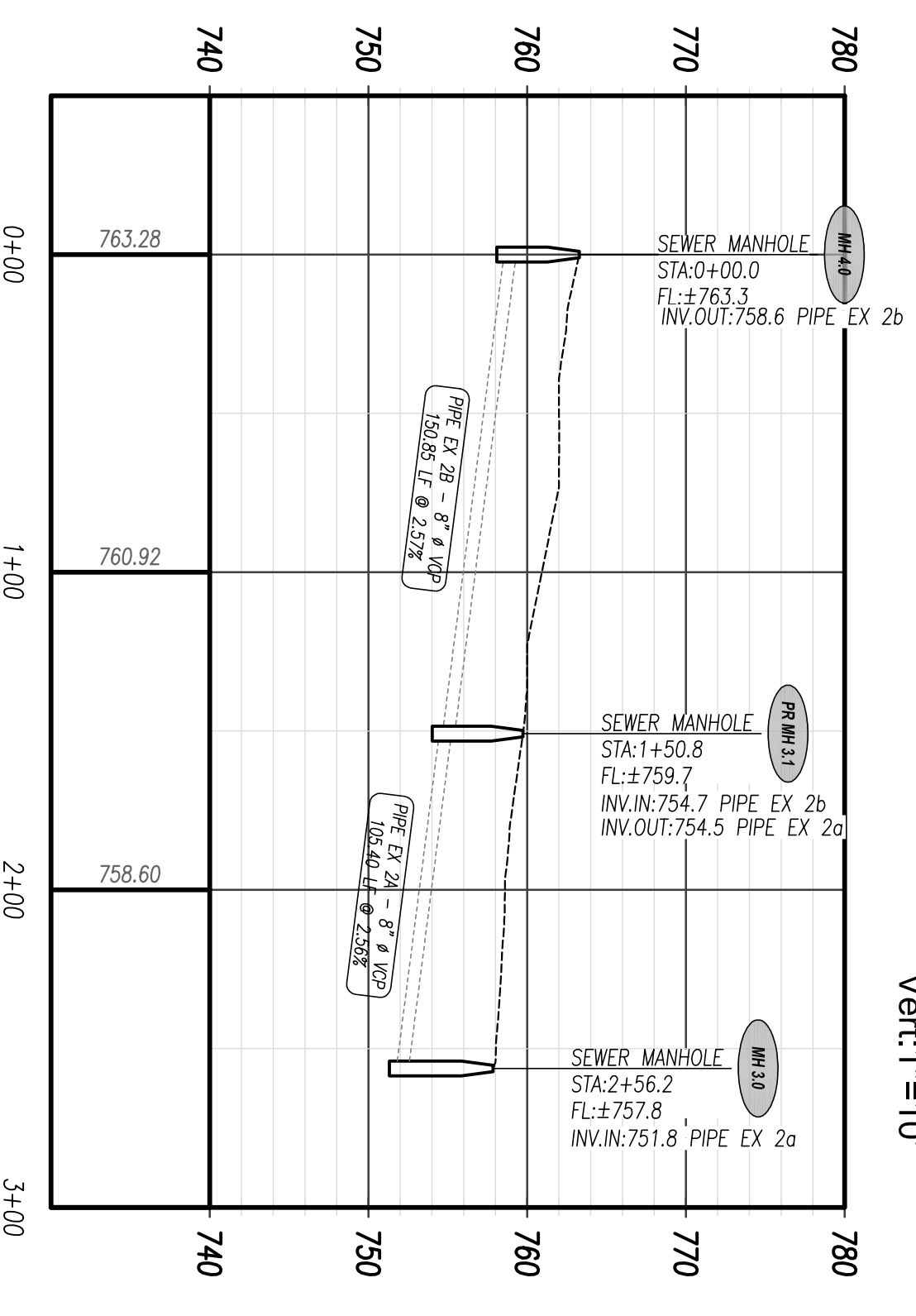
For Connection on West Broad Street



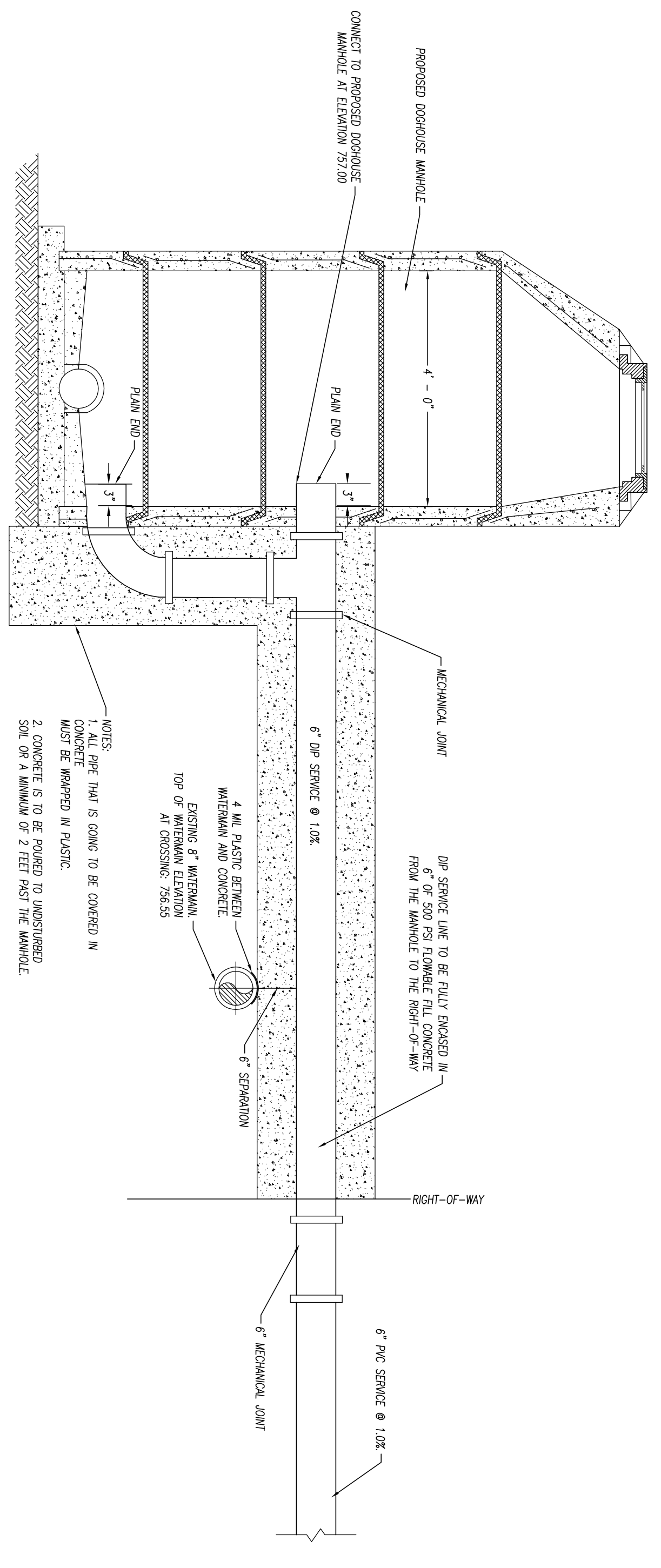
Water Pipe Bedding Detail



EX SS LINE - WEST BROAD STREET



EX SS LINE - OLD EPPS BRIDGE ROAD



For Sanitary Sewer Service Connection on Old Epps Bridge Road

REVIEW SET BID SET CONSTRUCTION SET

ATHENS MEDICAL COMPLEX
ATHENS-CLARKE COUNTY, GEORGIA
4.425 ACRES - WEST BROAD STREET

Williams & Associates
ENGINEERING • SURVEYING
LANDSCAPE ARCHITECTURE
2470 Daniels Bridge Road, Suite 161
Athens, Georgia 30606
P: 706.310.0410
F: 706.310.0411
www.gaplaning.com

DATE:	03/01/2011
REVISIONS	
DATE	COMMENT
03/01/11	For generator pad and enclosure addition and plumbing comments.
04/29/11	For field change to inspection pool.
05/12/11	For KCCP/TPR comments on field change to inspection pool.
07/12/11	For Building 200 layout and grading modifications.
07/18/11	For KCCP/TPR comments and KCCP/TPR Building 200 layout and grading modifications.
07/21/11	For KCCP/TPR comments.

ALL DRAWINGS SHALL REMAIN THE PROPERTY OF WILLIAMS & ASSOCIATES. THESE INSTRUMENTS OR SERVICE ARE TO PROJECT. WILLIAMS & ASSOCIATES SHALL RETAIN ALL LEGAL RIGHTS TO THE CONSULTING ENGINEERING SERVICE UNDER UNITED STATES COPYRIGHT LAW.

10047
UTILITY DETAILS
13