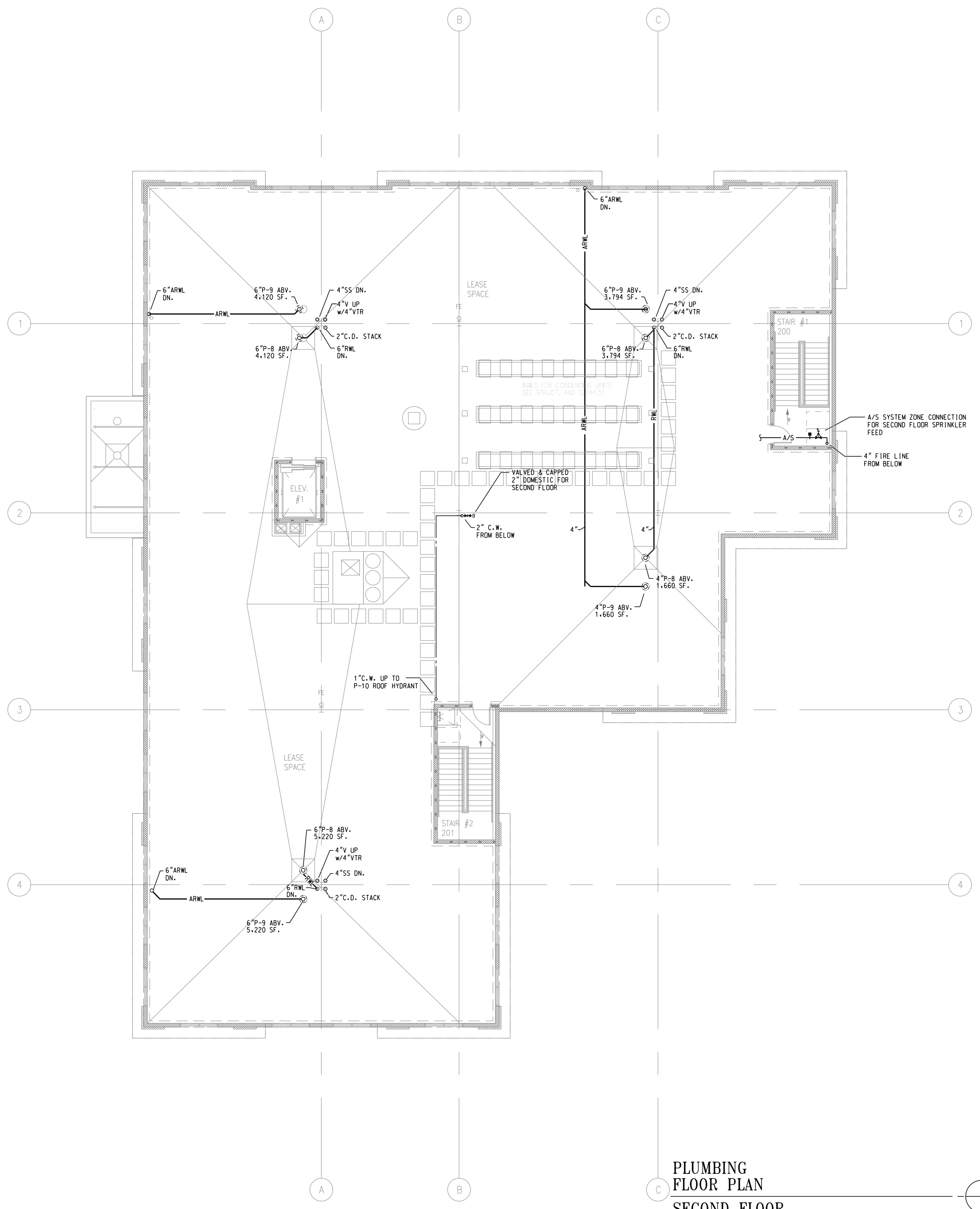


**ATHENS MEDICAL PLAZA II
 BUILDING 200
 2142 WEST BROAD STREET
 ATHENS, GEORGIA**

THIS DOCUMENT CONTAINS
 INFORMATION THAT IS
 CONFIDENTIAL TO DAVIS STOKES
 COLLABORATIVE, P.C. AND ITS
 DOCUMENT AND/OR IT'S
 CONTENTS MAY NOT BE
 REPRODUCED OR DISCLOSED TO
 OTHERS, EITHER IN WHOLE OR
 IN PART, WITHOUT THE PRIOR
 WRITTEN CONSENT OF DAVIS
 STOKES COLLABORATIVE, P.C.
 COPYRIGHT 2011. ALL RIGHTS
 RESERVED.

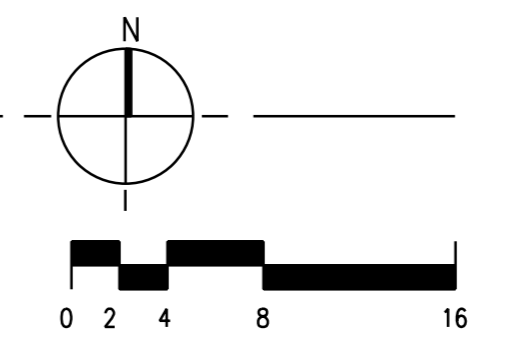
**DAVIS · STOKES
 COLLABORATIVE, P. C.**
 A · R · C · H · I · T · E · C · T · S
 7121 CROSSROADS BLVD. BRENTWOOD, TENNESSEE 37027 TEL: 615-726-0010
 http://www.dsccol.com EMAIL: dsccol@dsccol.com FAX: 615-726-2090



PLUMBING PLAN NOTES:
 1. ALL VTR'S TO BE EXTENDED TO A MINIMUM OF 12" ABOVE TOP OF PARAPHET WALL.

A/S SYSTEM DESIGN INTENT NOTES:
 1. SEE SHEET P2.01 FOR NOTES.

**PLUMBING
 FLOOR PLAN
 SECOND FLOOR**



WALL LEGEND		
GYP. BD.	CMU	WALL CONSTRUCTION TYP.
---	---	EXISTING PARTITION
---	---	UNRATED PARTITION TO ABOVE CLG.
---	---	UNRATED PARTITION TO DECK
---	---	LEASE SPACE PARTITION
---	---	ONE HOUR FIRE PARTITION
---	---	ONE HOUR FIRE - SMOKE PARTITION
---	---	TWO HOUR FIRE PARTITION
---	---	TWO HOUR FIRE - SMOKE PARTITION
---	---	ONE HOUR SHAFT WALL
---	---	FOUR HOUR FIRE WALL

NOTE: ALL WALL TYPES MAY NOT BE USED.

REVISION		
NO.	DATE	DESCRIPTION

P2.02

ISSUE DATE: 08.01.11	JOB NUMBER: 10960
-------------------------	----------------------